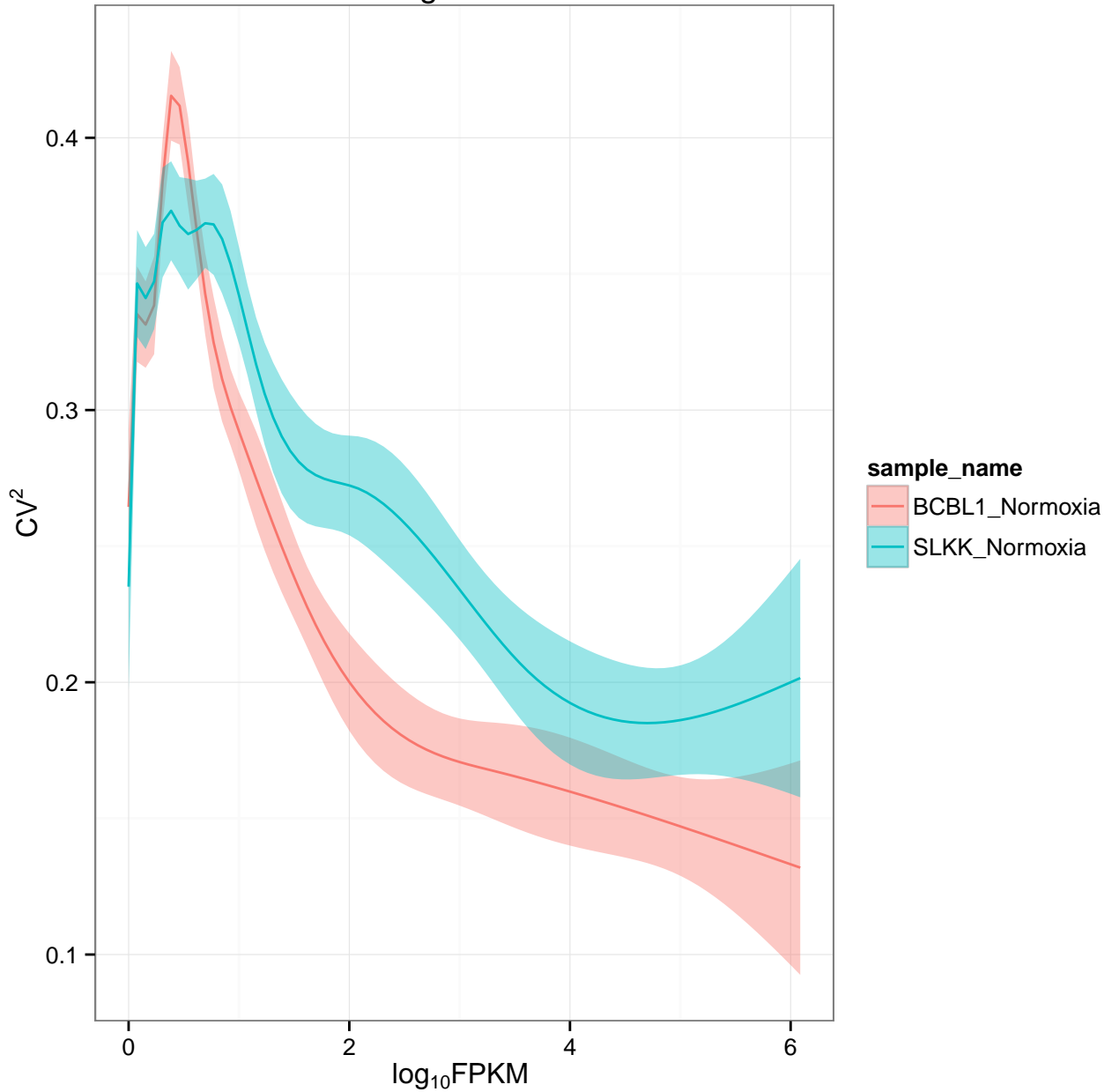
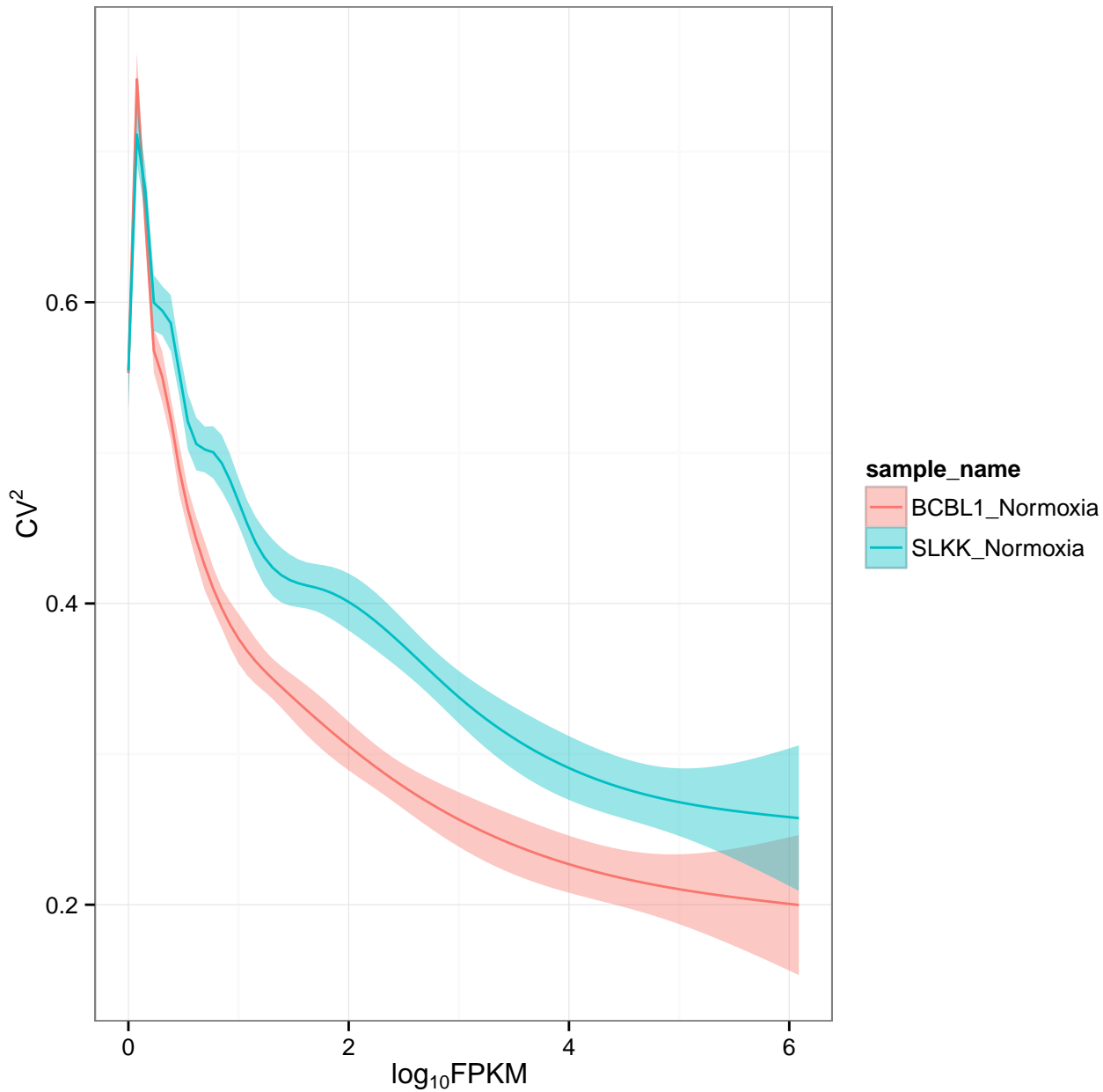


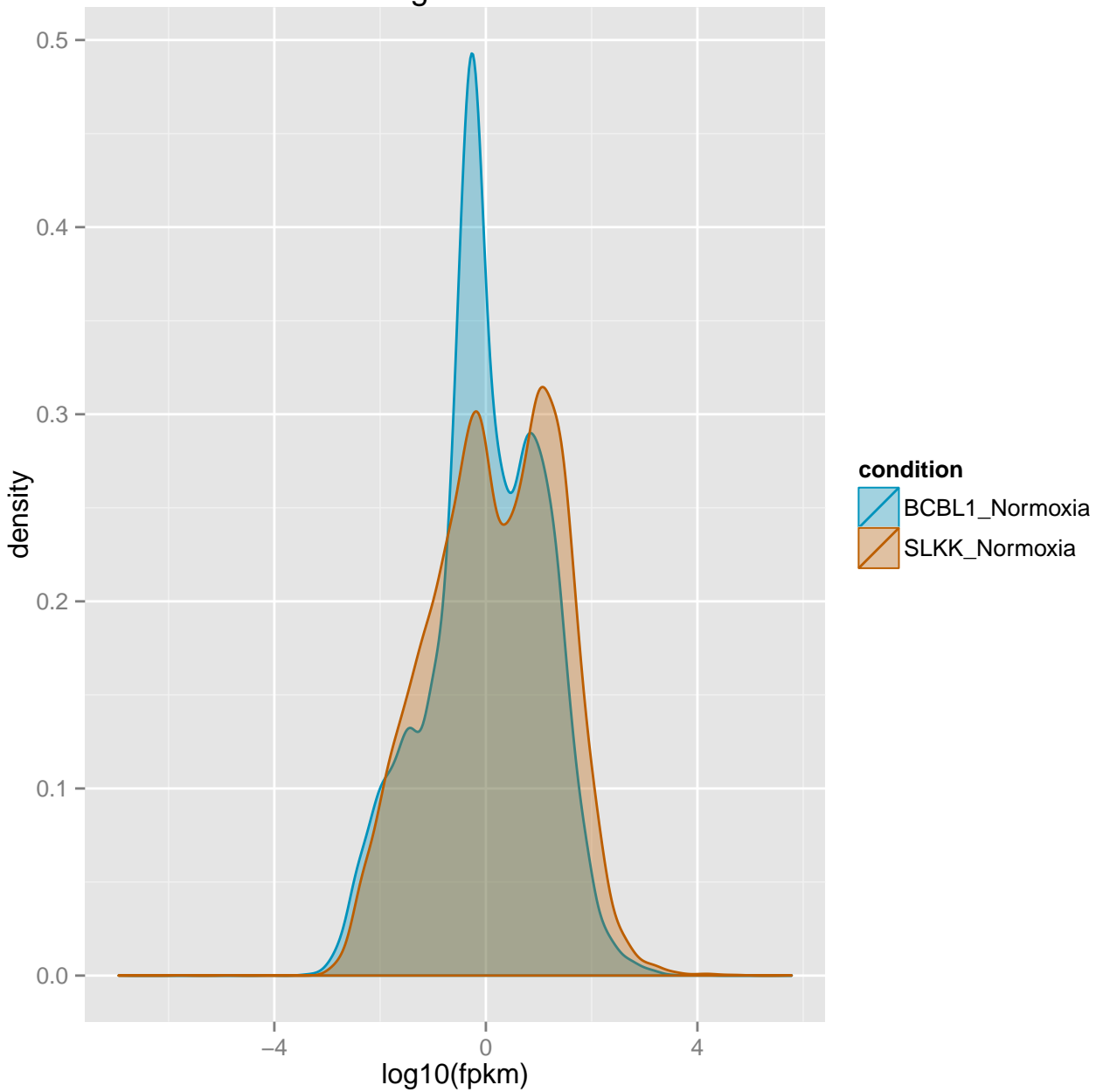
genes



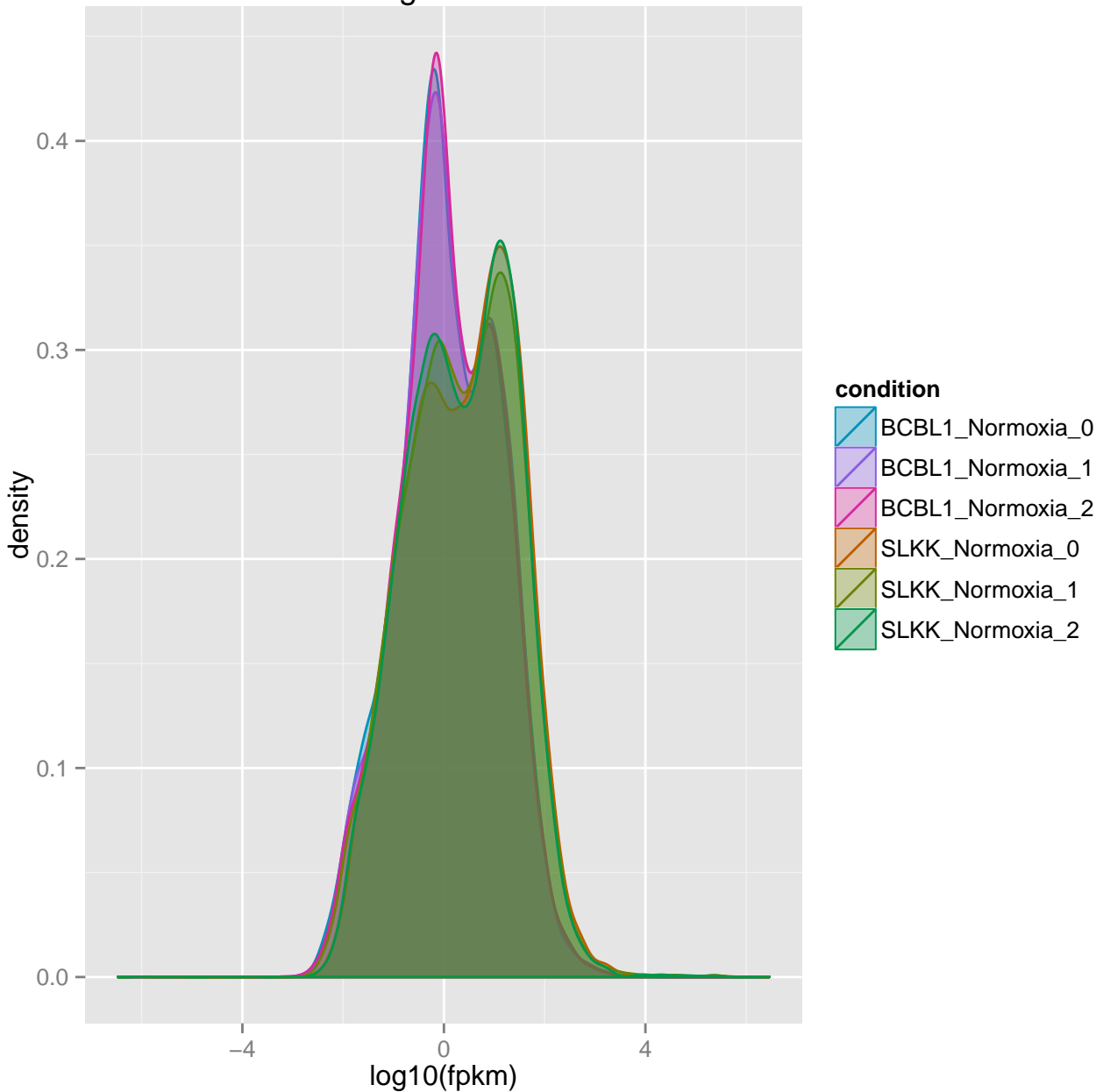
isoforms

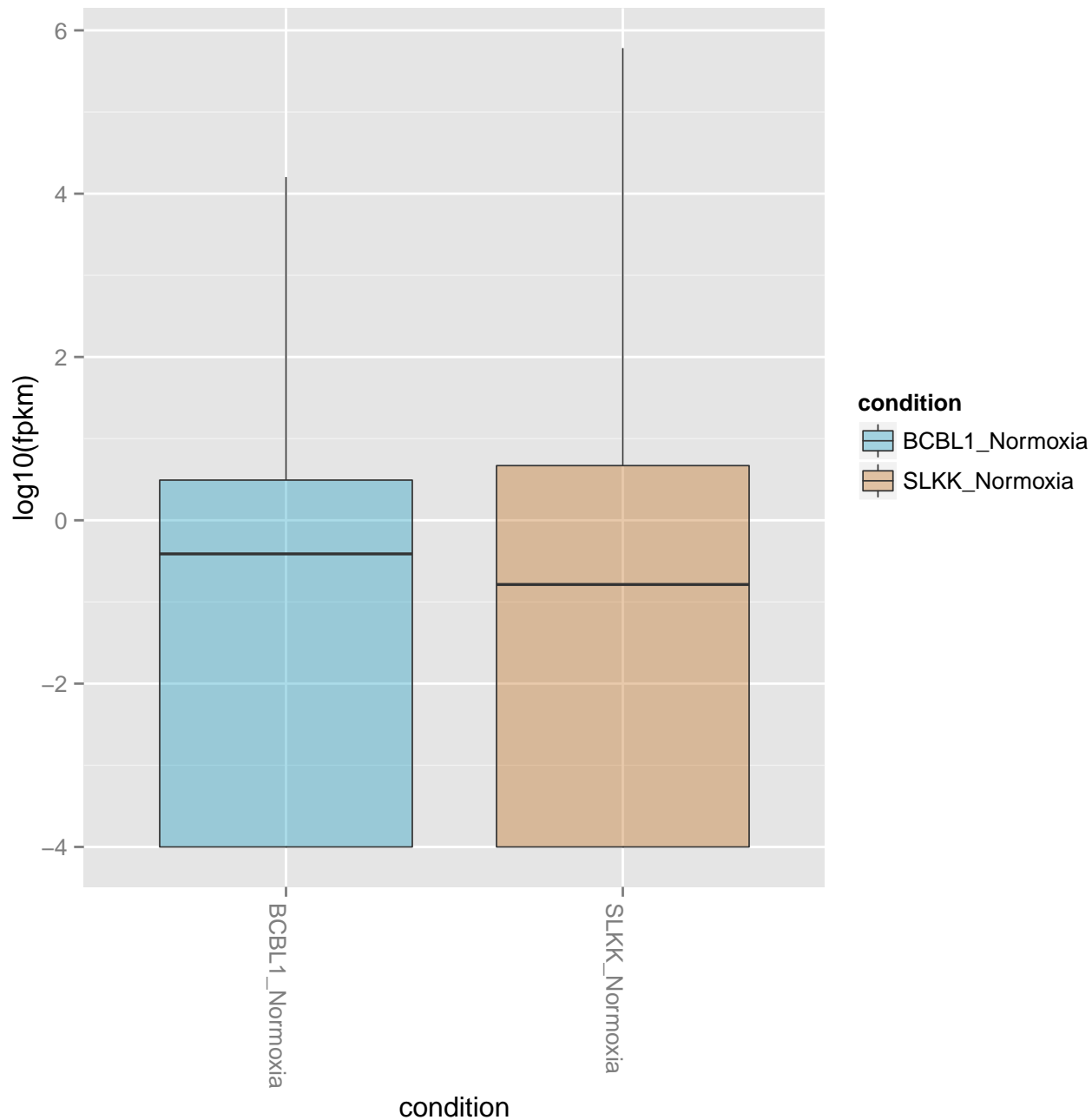


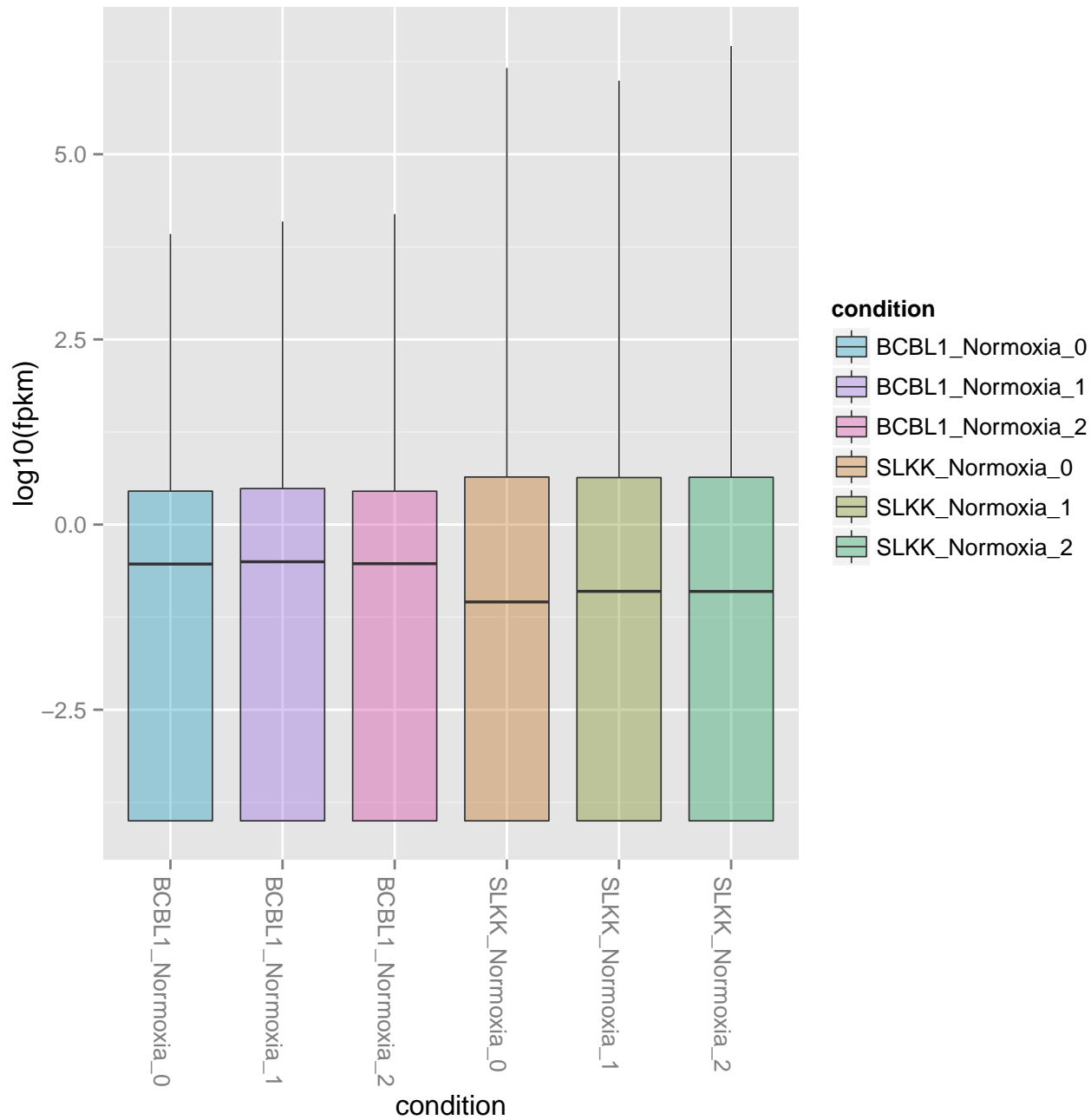
genes

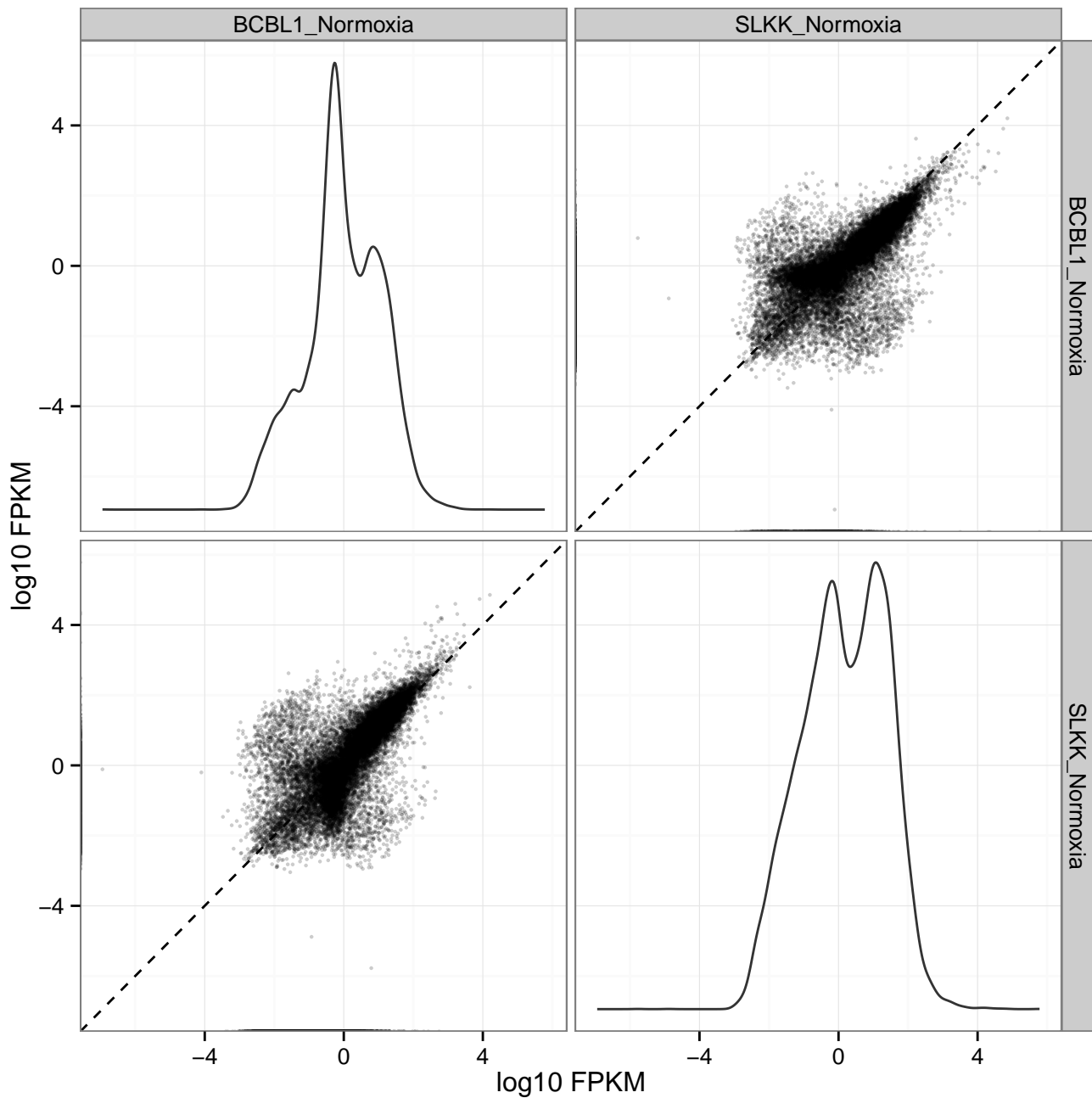


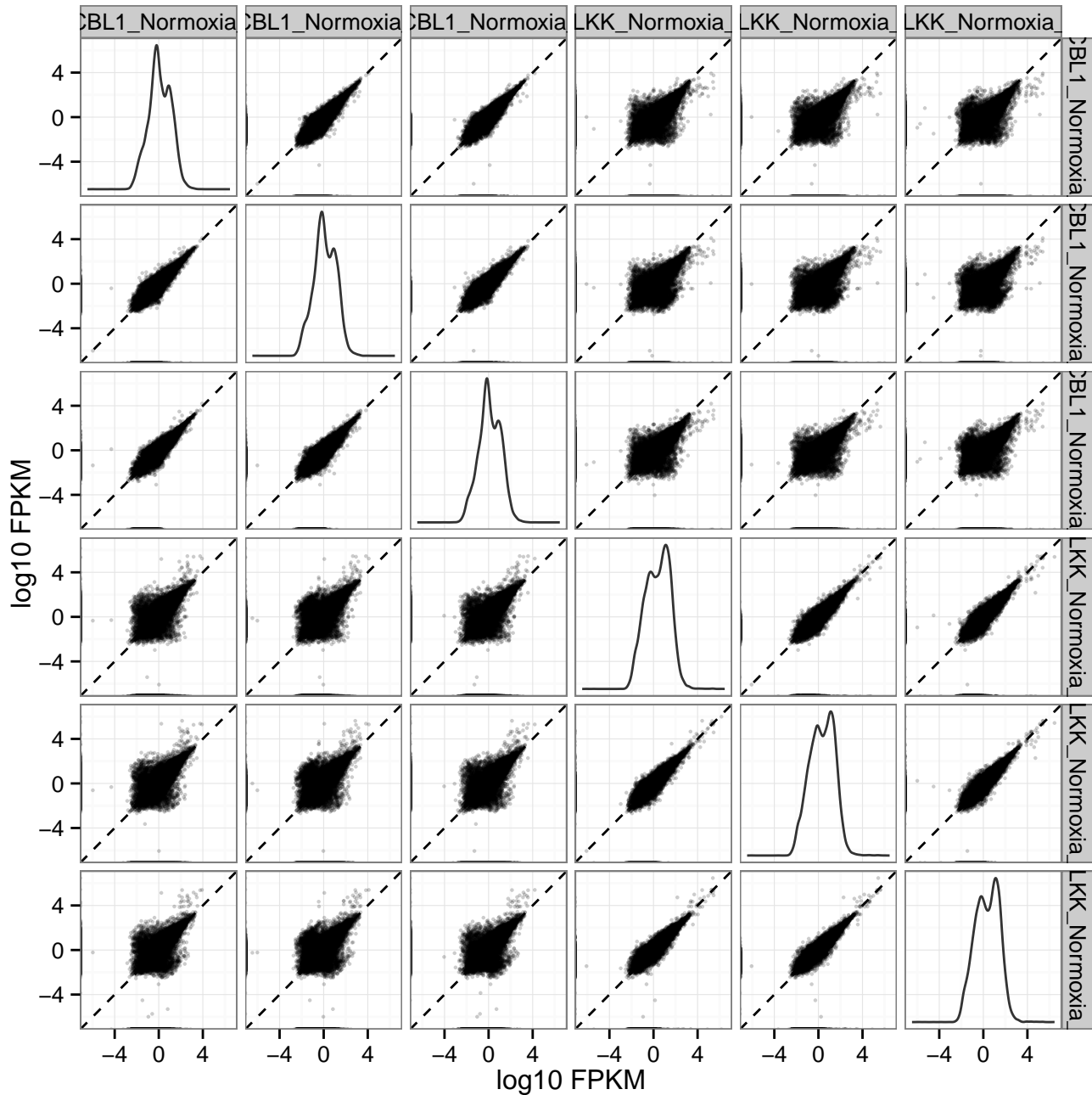
genes



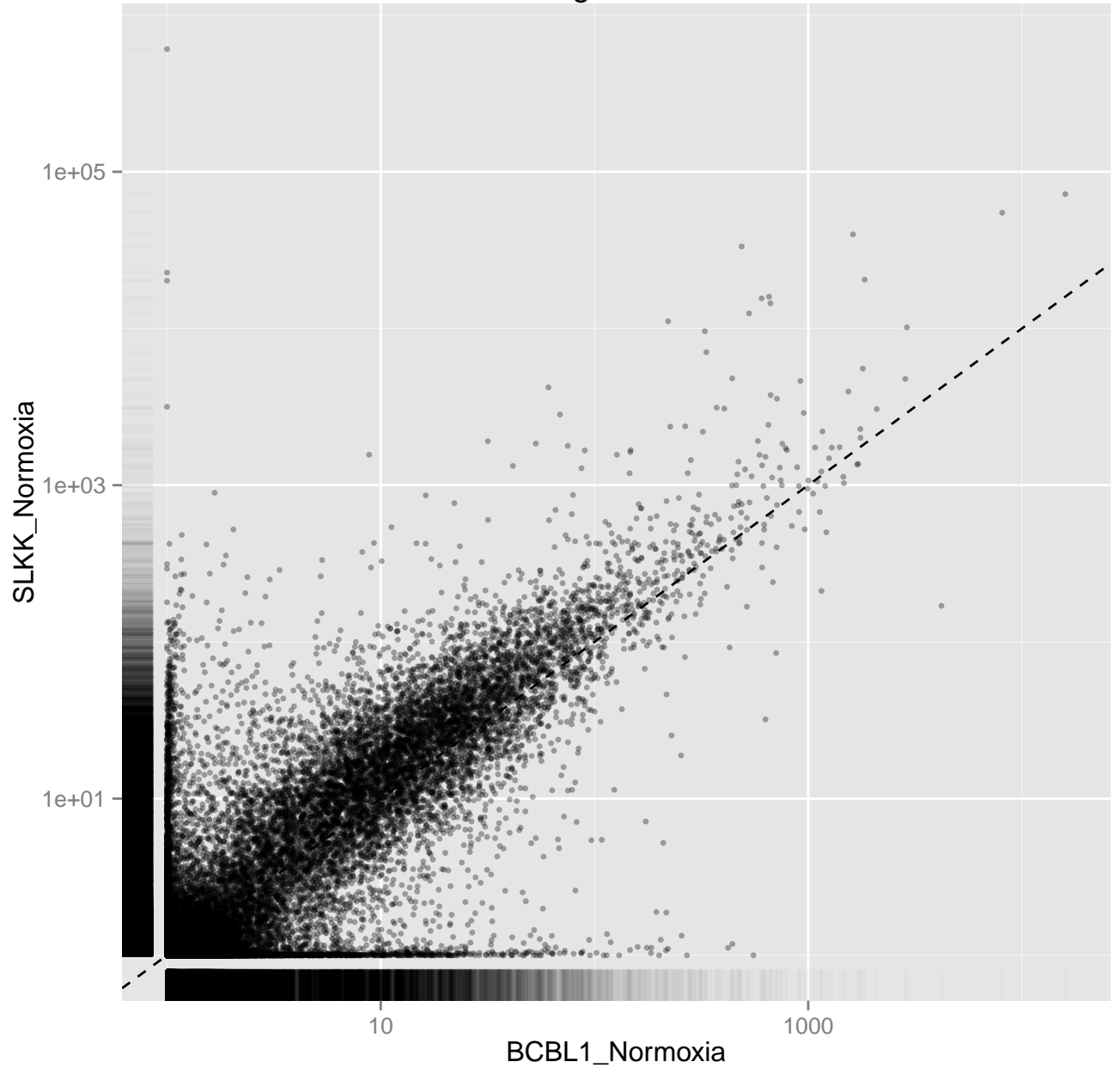




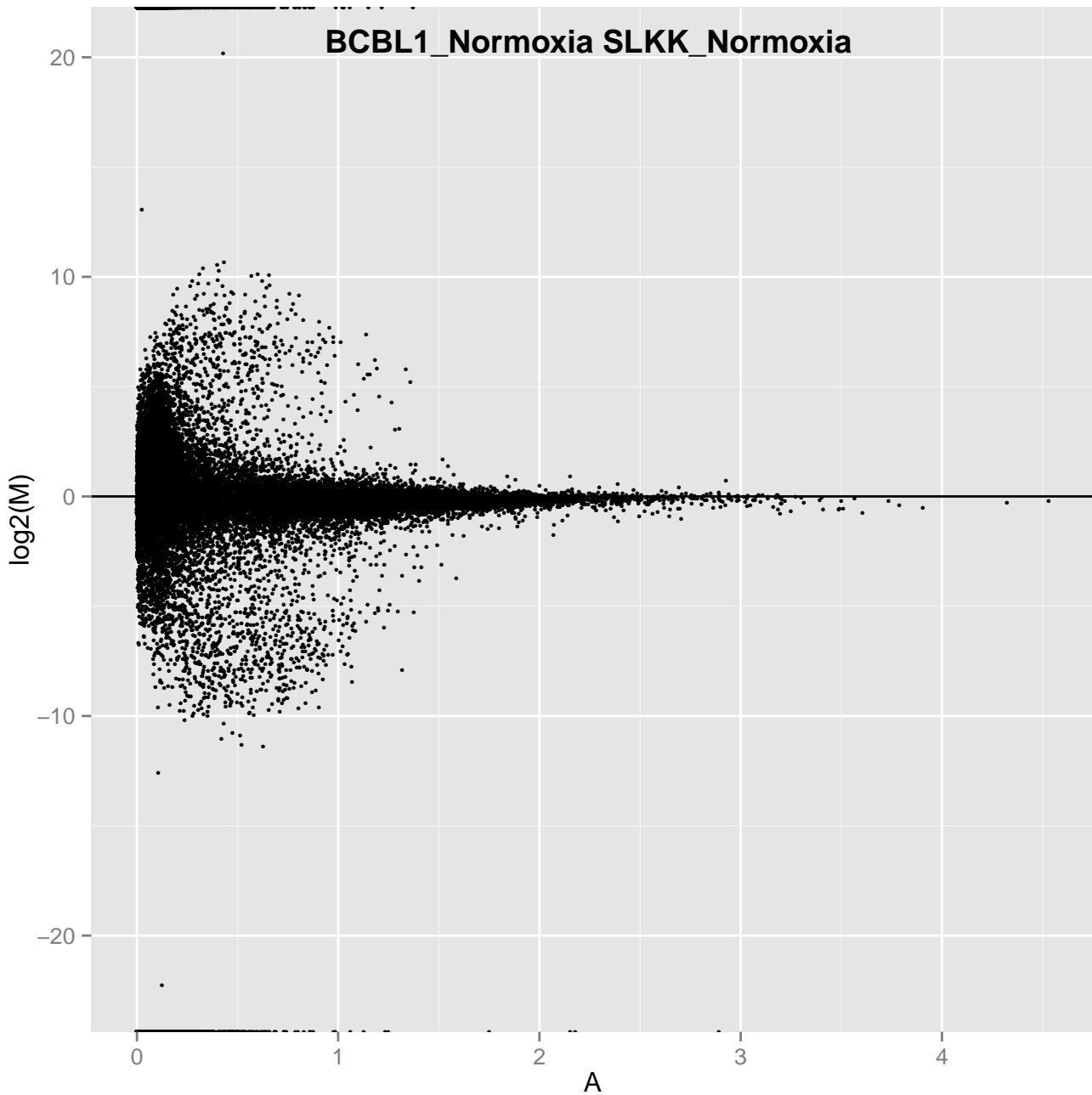




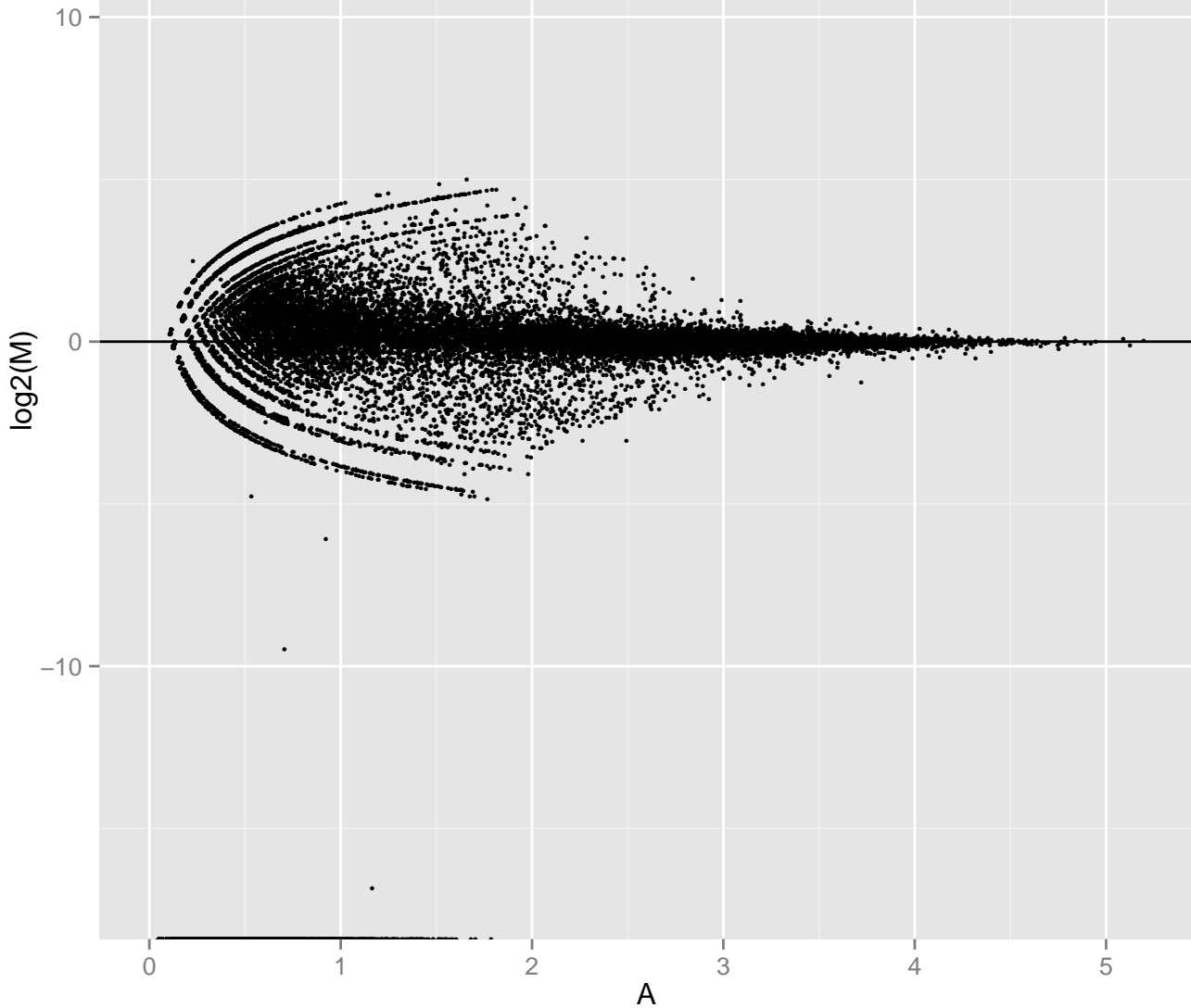
genes



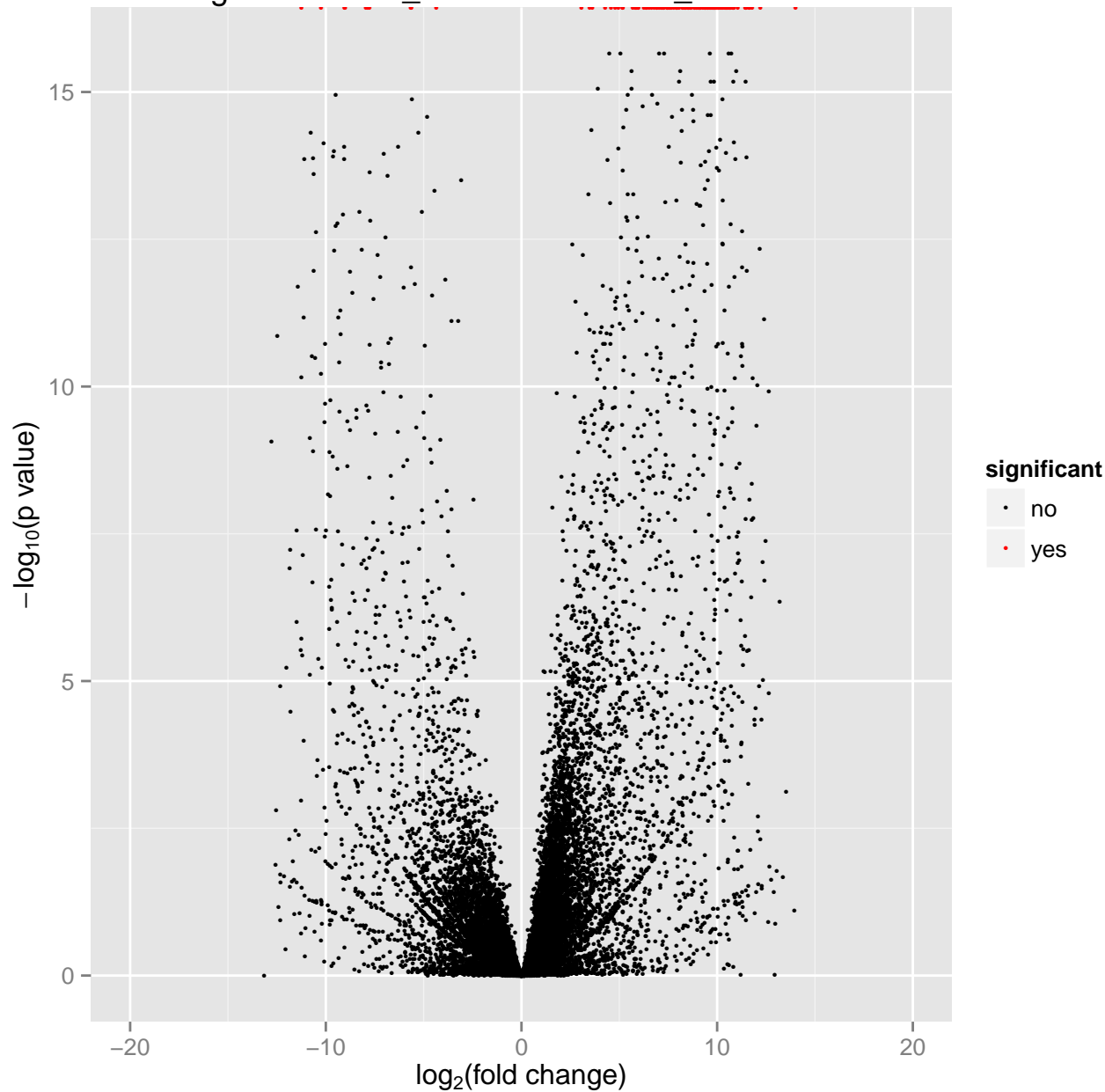
BCBL1_Normoxia SLKK_Normoxia



normalized count values BCBL1_Normoxia SLKK_Normoxia



genes: SLKK_Normoxia/BCBL1_Normoxia



genes

BCBL1_Normoxia

1000

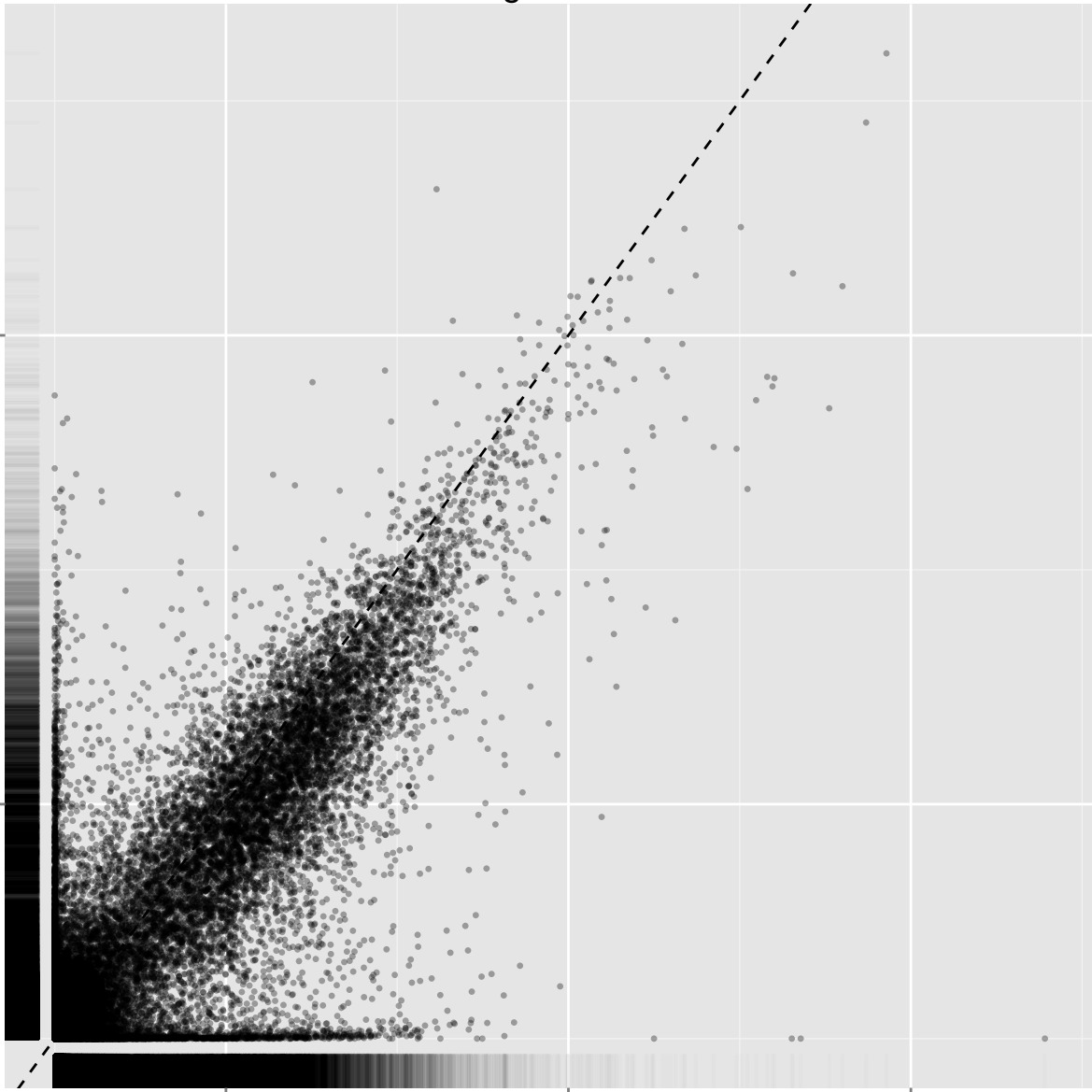
10

1e+01

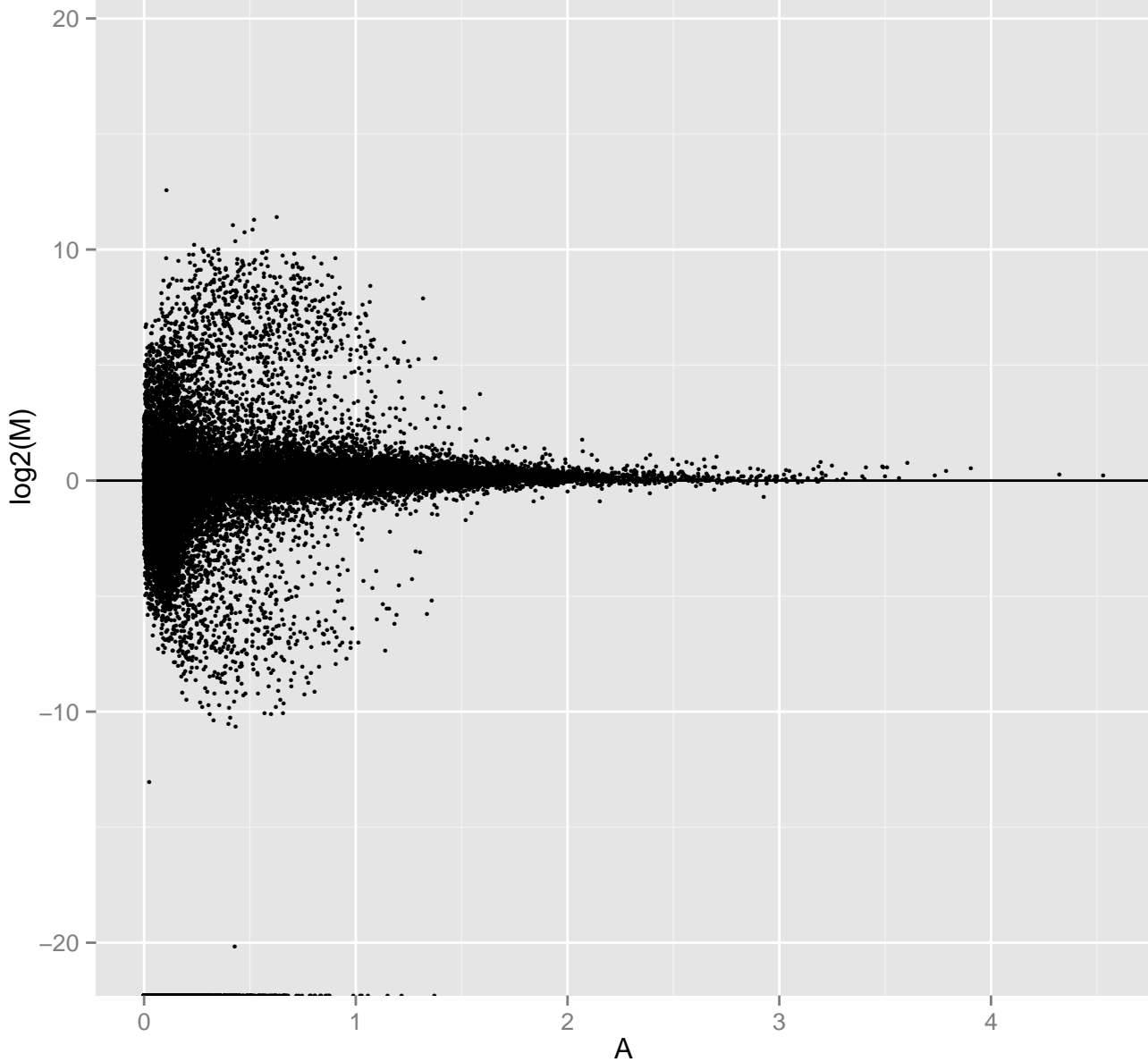
1e+03

1e+05

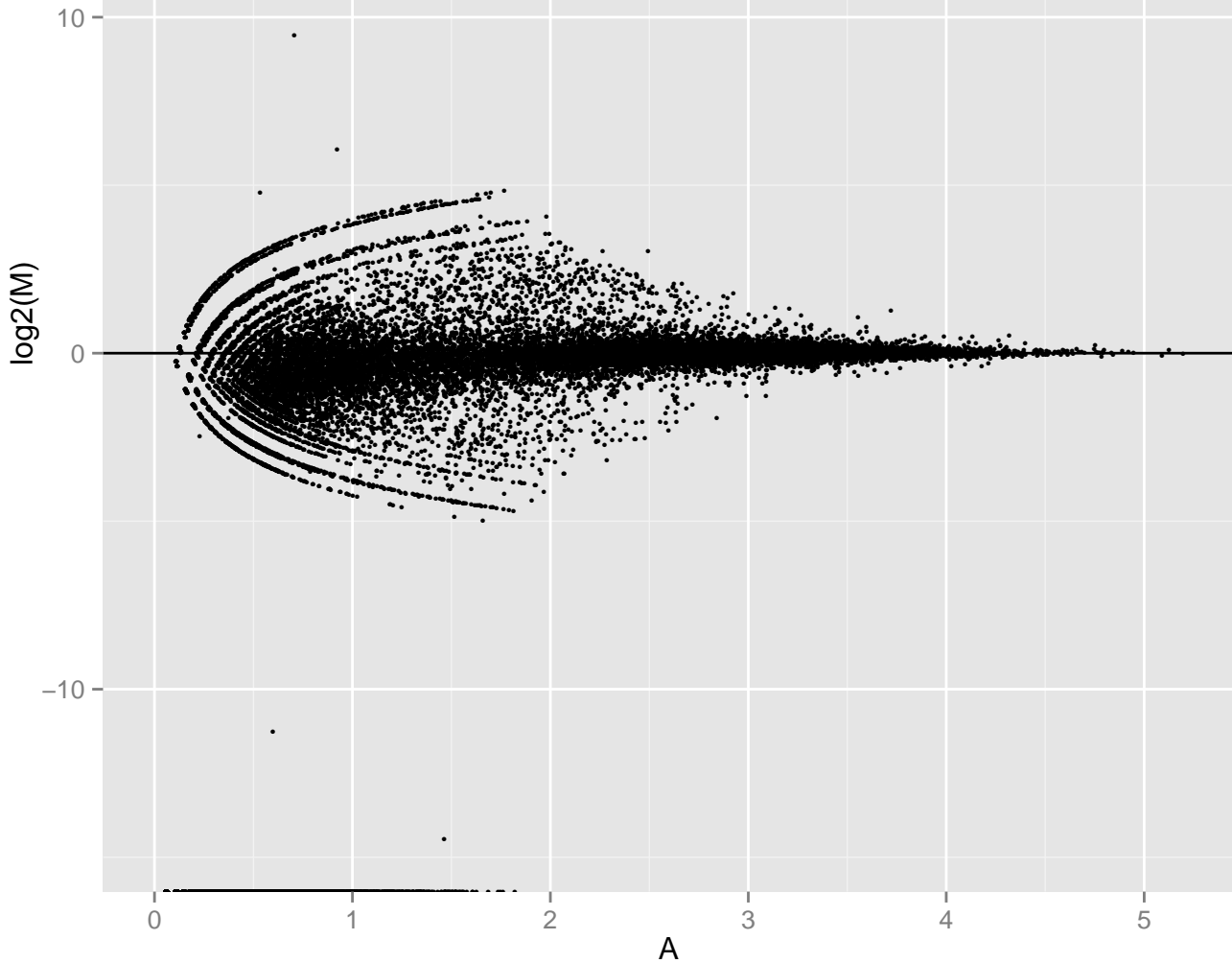
SLKK_Normoxia



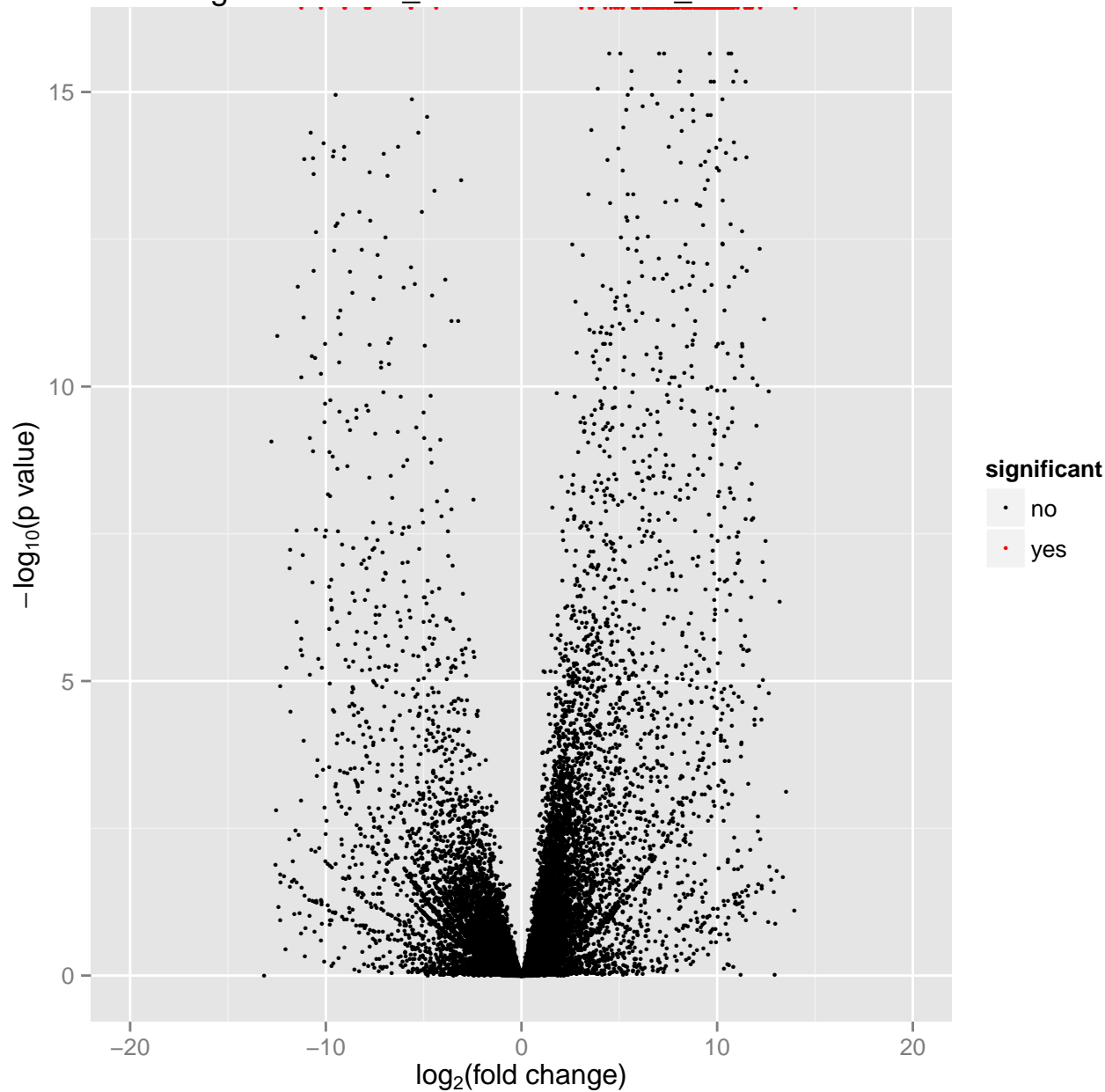
SLKK_Normoxia BCBL1_Normoxia

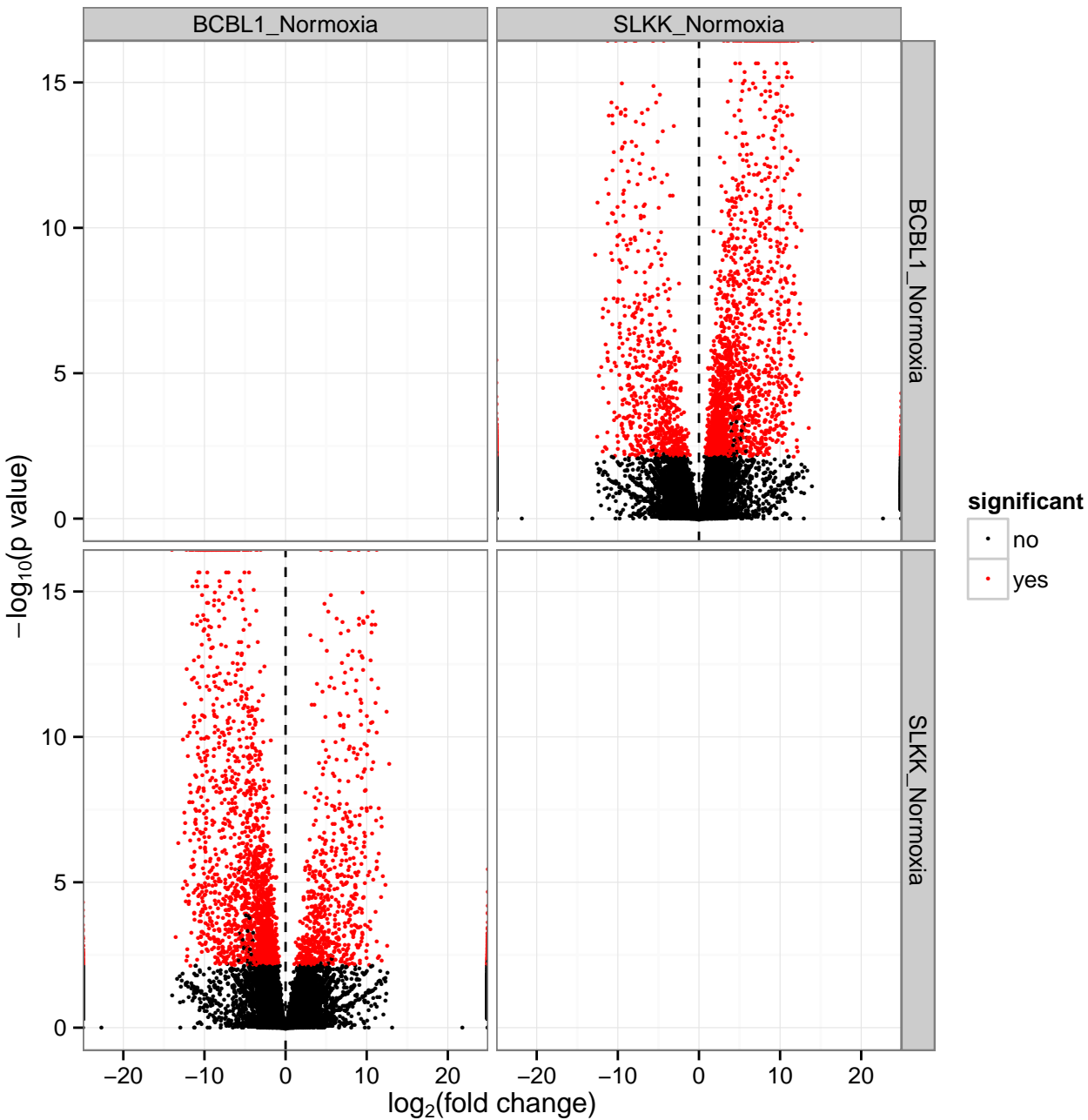


normalized count values SLKK_Normoxia BCBL1_Normoxia

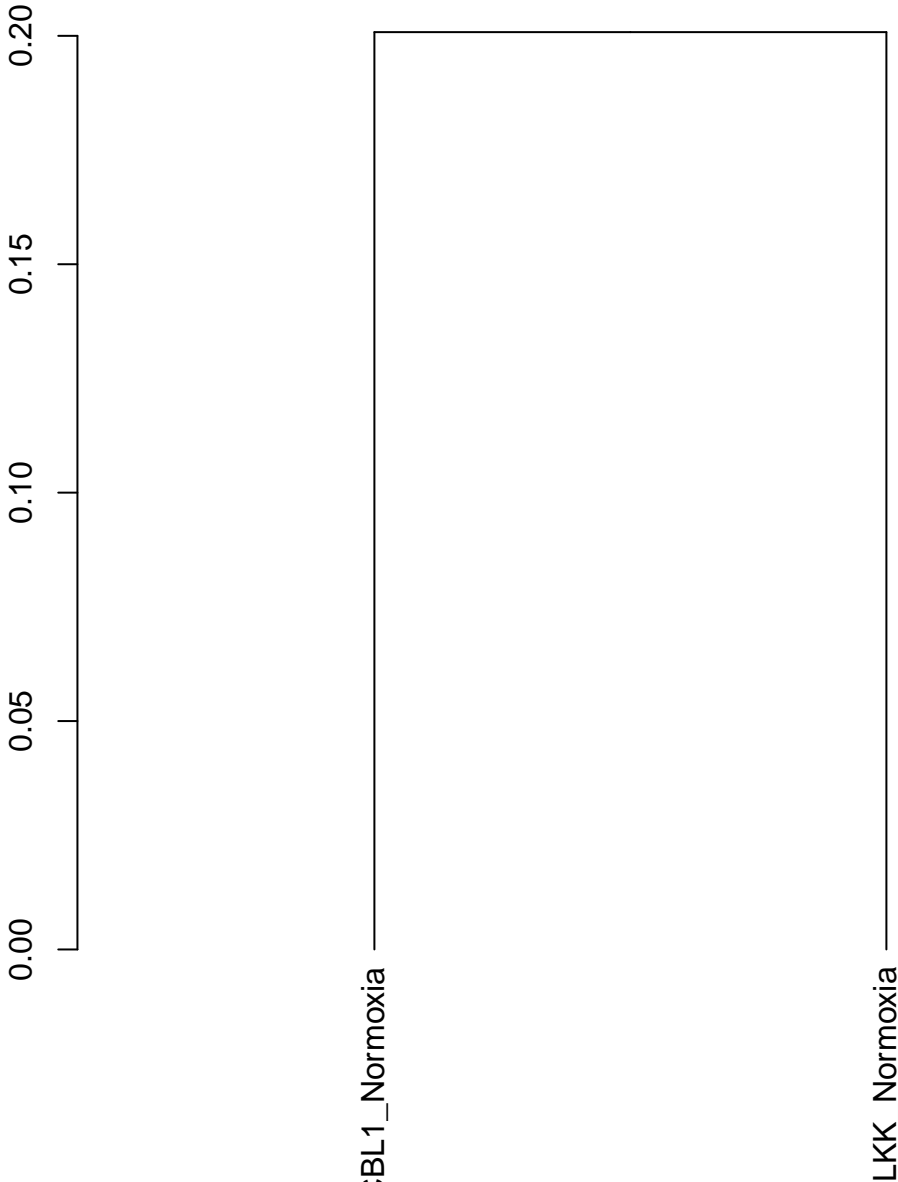


genes: SLKK_Normoxia/BCBL1_Normoxia

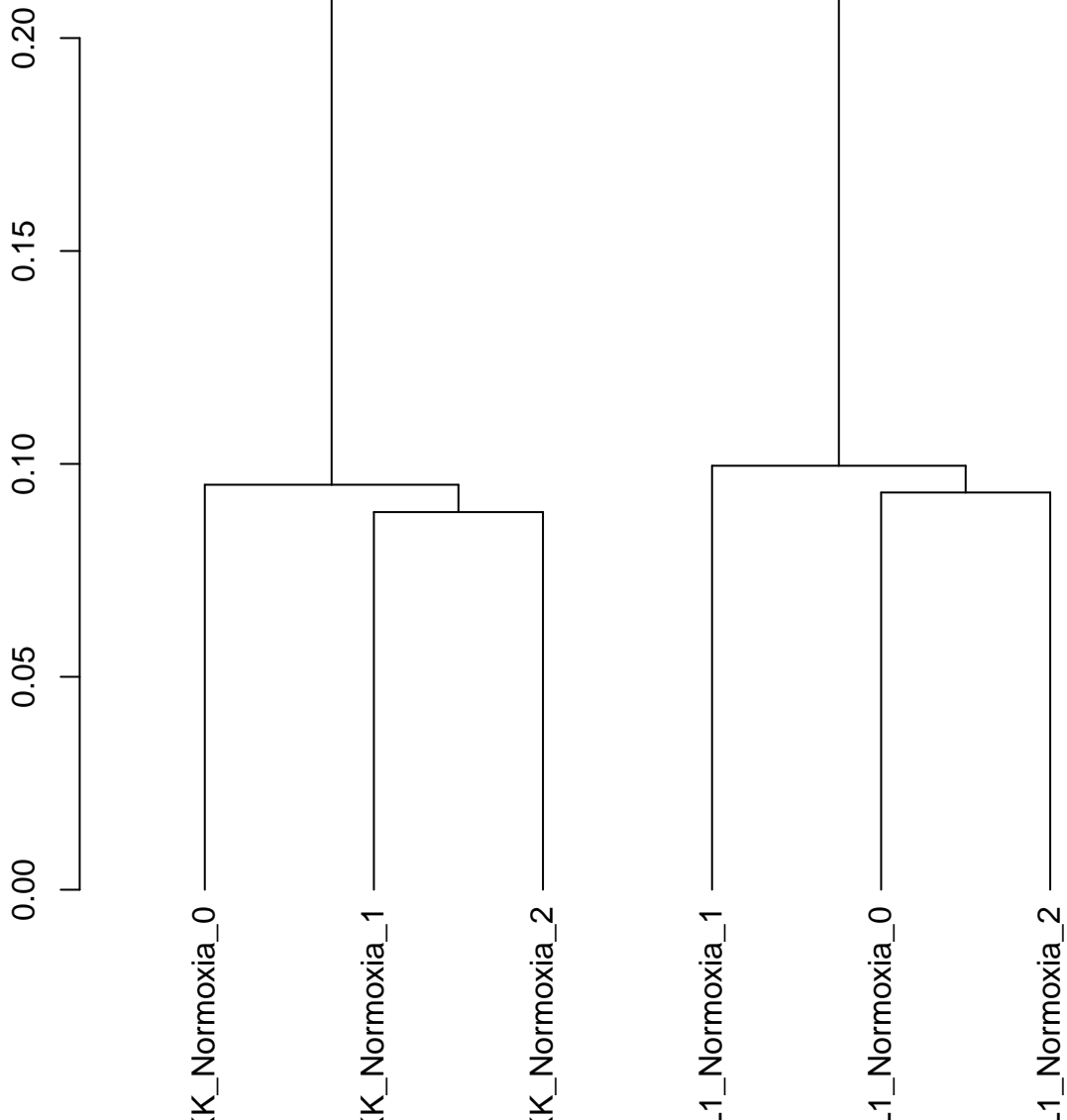


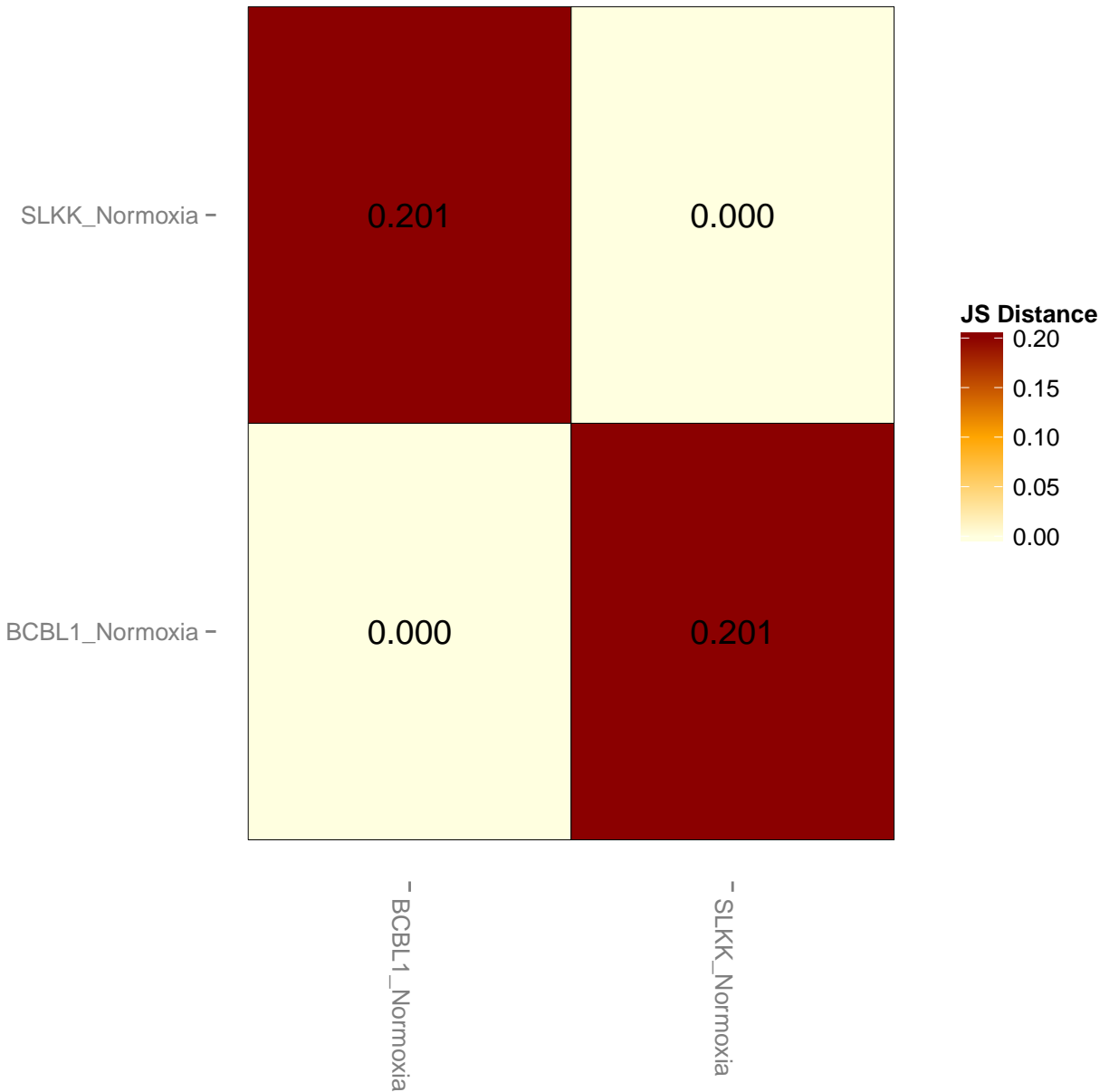


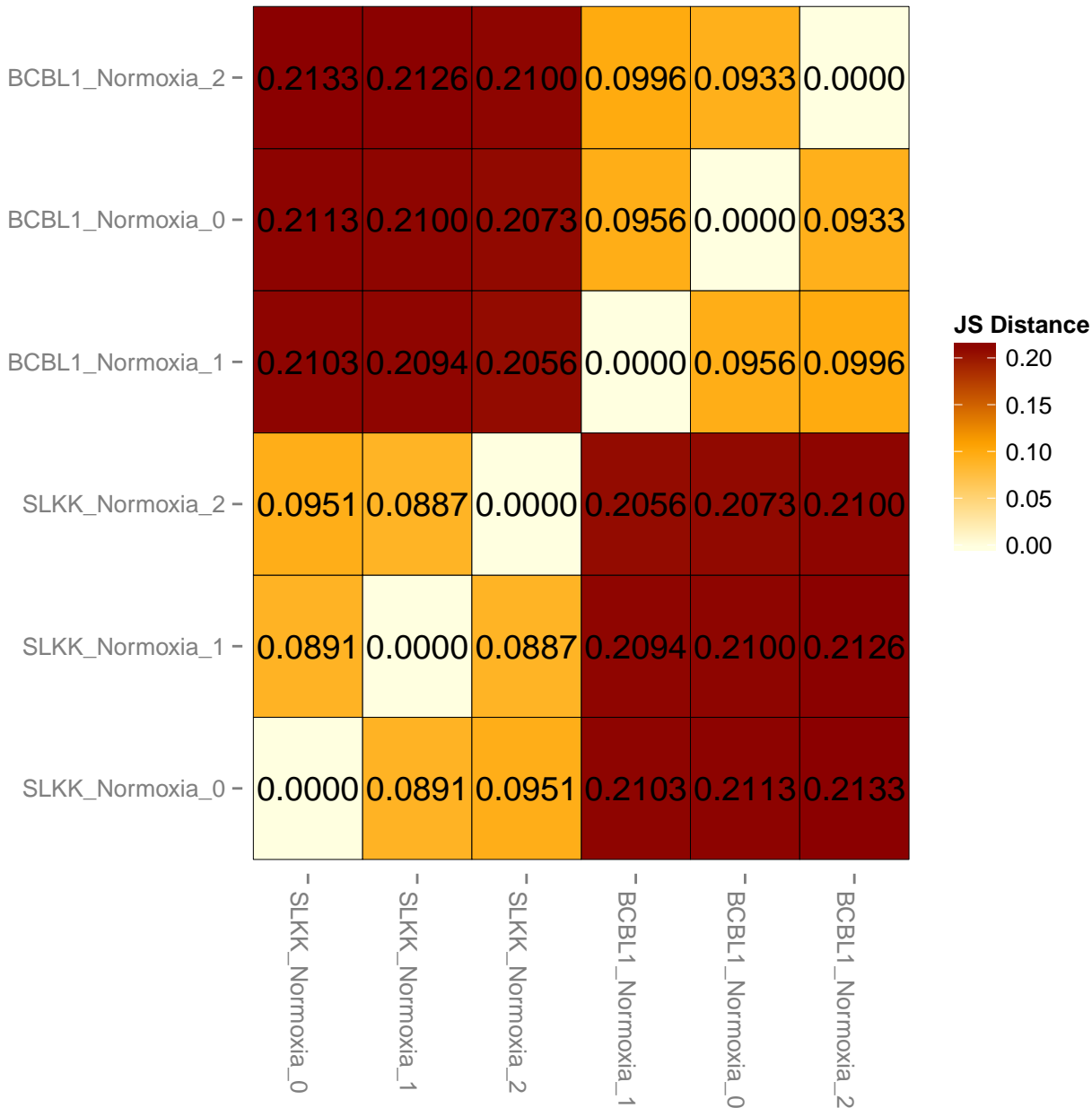
All genes(cuff)

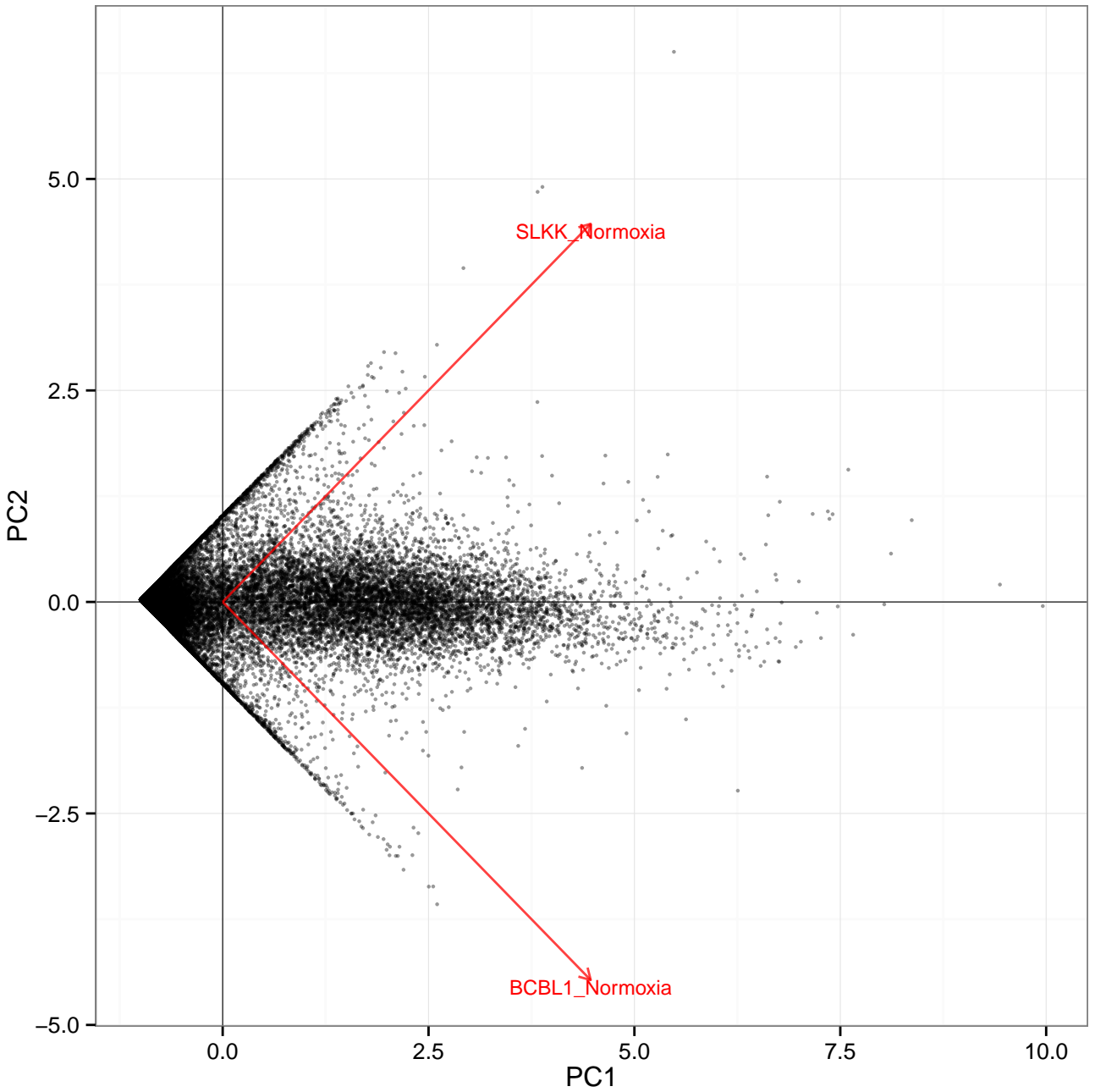


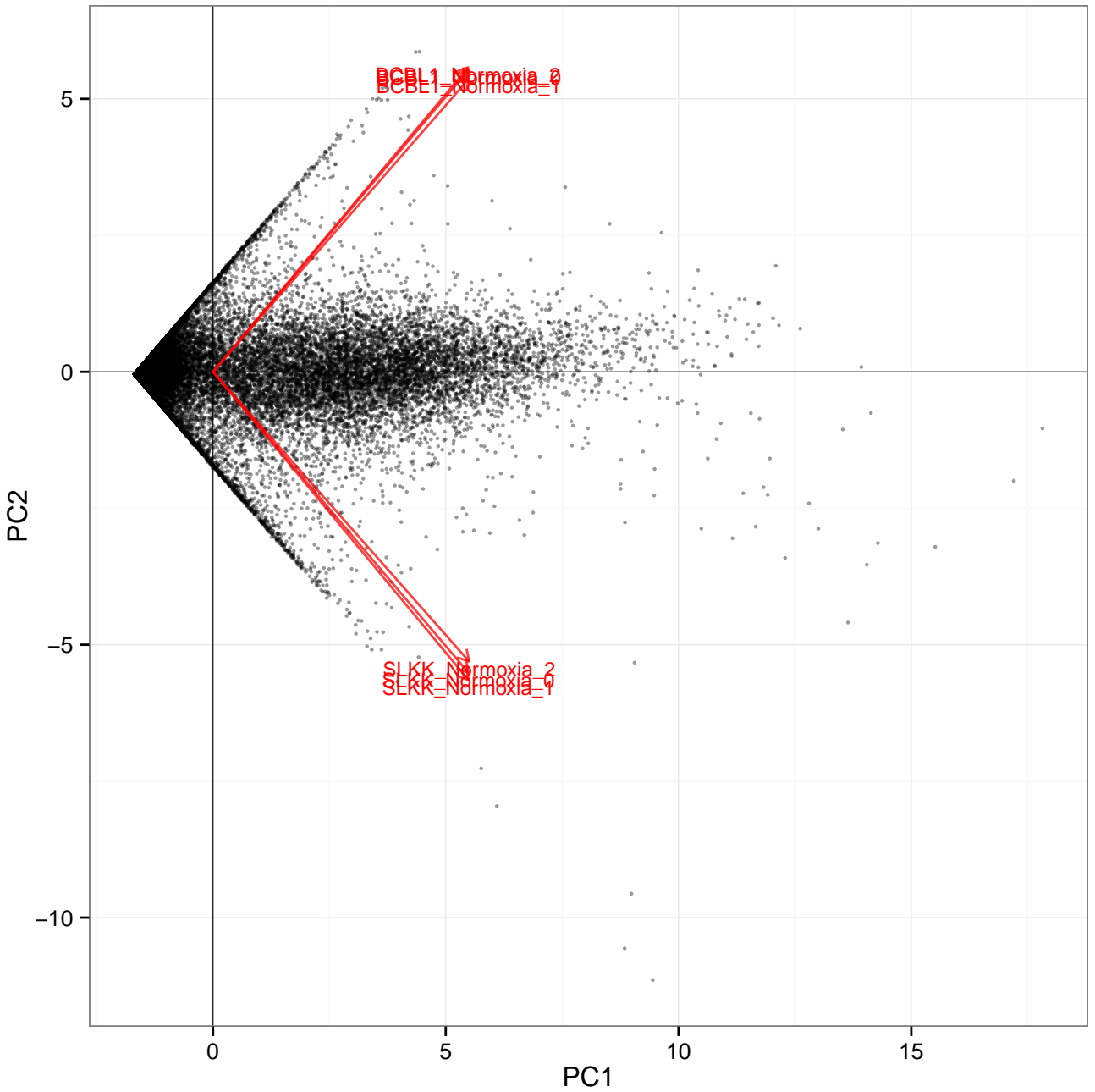
All genes(cuff)

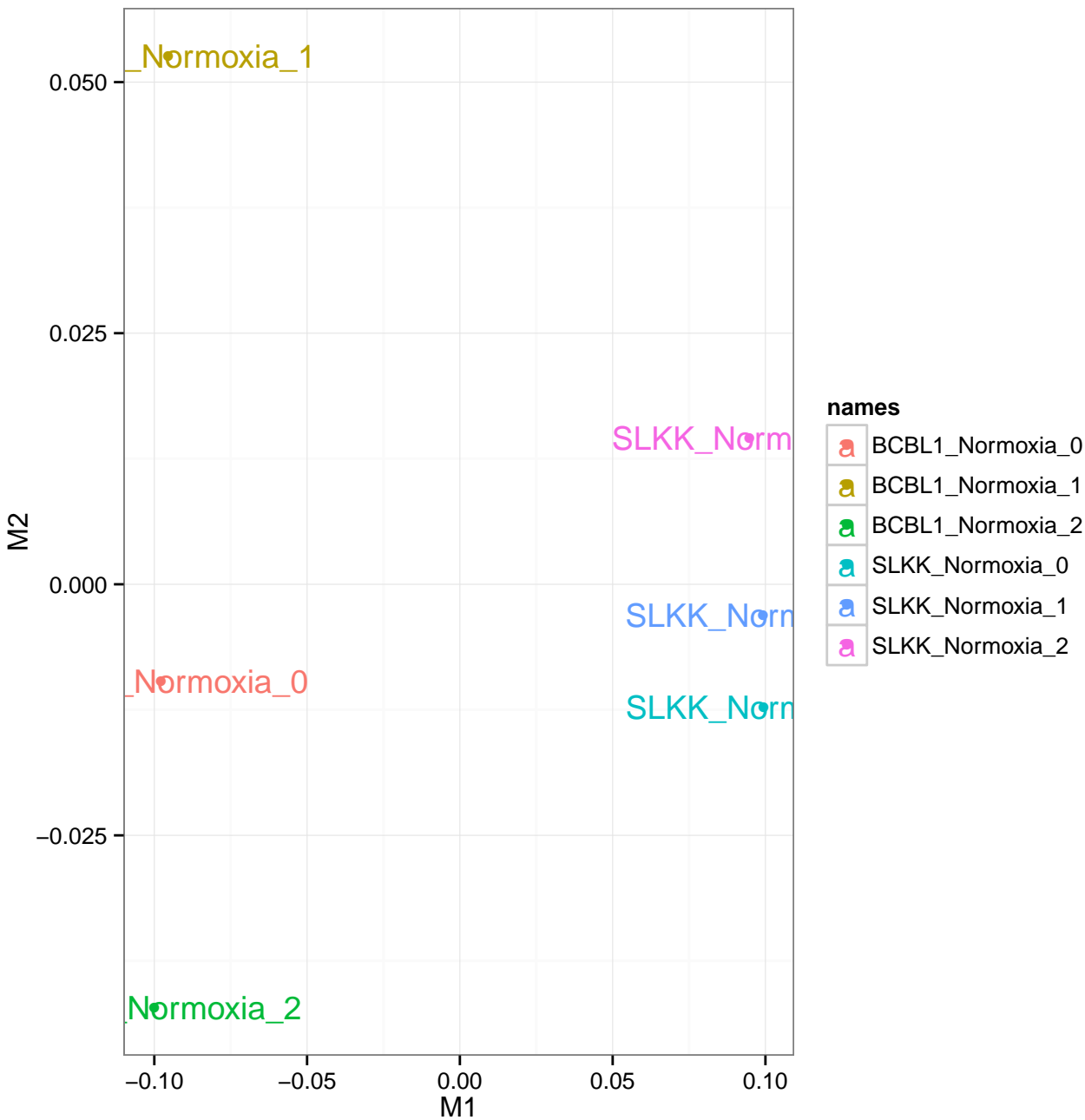












Significant genes
at alpha 0.001

sample_2

SLKK_Normoxia

1249

BCBL1_Normoxia

sample_1

n

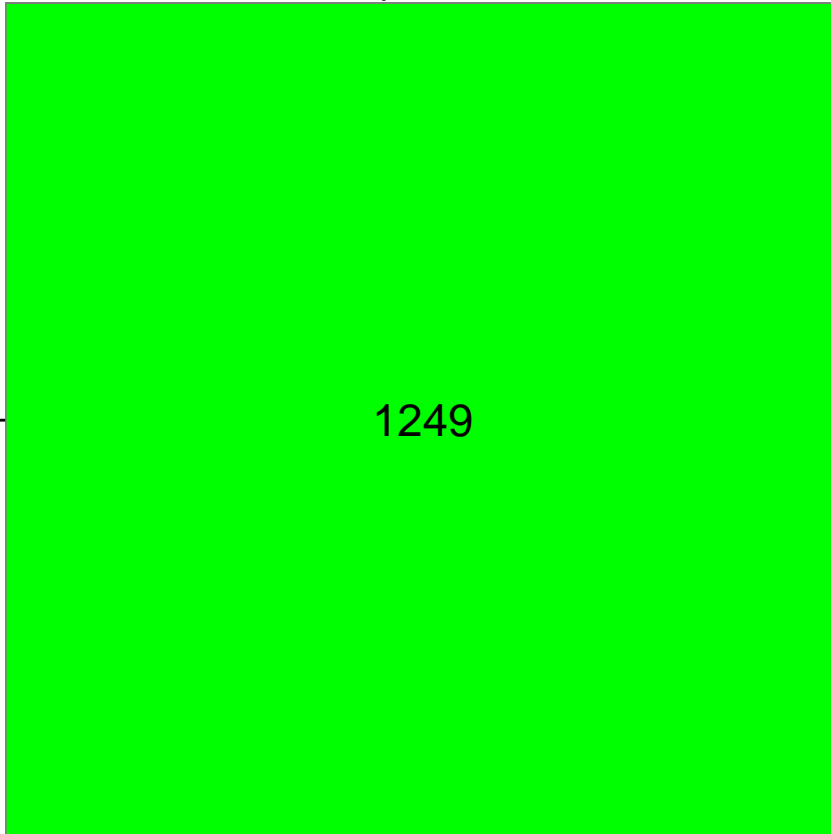
1000

750

500

250

0



Significant genes
at alpha 0.01

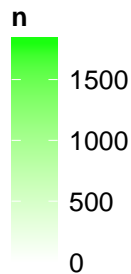
sample_2

SLKK_Normoxia

1825

BCBL1_Normoxia

sample_1



Significant genes
at alpha 0.05

sample_2

SLKK_Normoxia

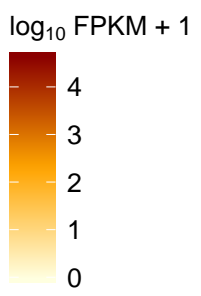
3002

BCBL1_Normoxia

sample_1



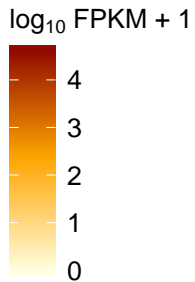
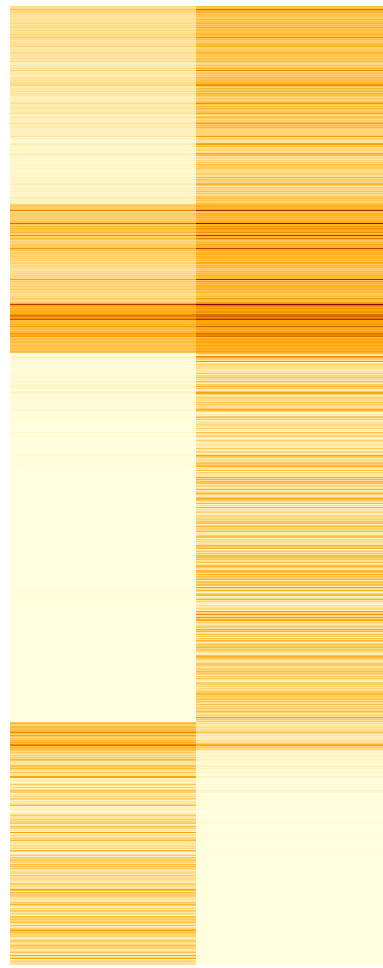
ITGB1, IGF1R, GPRC5A, ADAMTSL4, CCNYL1, CCR1, GALNT1, SH3BP1, FLJ23855, ENTP1, DHX15, MIR671, ANXA8, LOC643655, HYAL1, APOA1, HOXA2, HOXA1, TNF, NFKB1, MAFK, LINC00936, LINC00935, INHBA, AC105163, APOA1, LOC101928, LOC101927, LOC101926, LOC101925, LINC00511, LOC101924, LOC101923, RGRIP1, LOC101922, HOXC4, HOXC5, C10H1223, LOC1001310, MAFK, C4A, LOC101921, LOC101920, CEH1, OR2WB, HFK1, HOXB9, MIR1000



BCBL1_Normoxia

SLKK_Normoxia

AFB1
 DFF
 IQCJ,IQCJ-LOC100141111
 CCNY1
 CH1
 GAT
 DIRC2,LOC100141111
 ZNF670,ZNF670-ZNF699
 KIAA0494,LOC100141111
 MIR4608
 FIAO3
 SNHG3
 C1orf151-NBL1,MIK
 CNTF,ZFP91,ZFP91
 KIAA0105
 LS
 HOXA2,HOXA2-AS1
 HYMN
 ANXA8,LOC643659,ANXA8-AS1
 ALDH4A1
 LINC5052
 INHBA,INHBA-AS1
 RGF1
 LINC00511,LS
 LOC100141111
 LOC100141111
 HOXBAC
 MOG1
 ANKRD1
 COB1,ANKRD1
 HOXC4,HOXC4-AS1
 MAP7B
 MIR4731,LOC100141111
 C4A,LOC100141111
 ORZM1
 CEBF
 C4A,LOC100141111
 LOC100131011



BCBL1_Normoxia

SLKK_Normoxia

