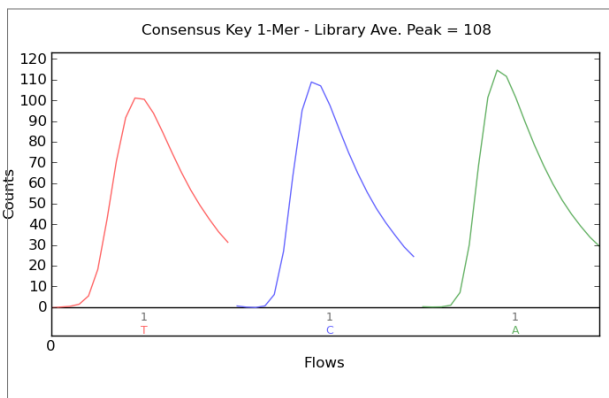
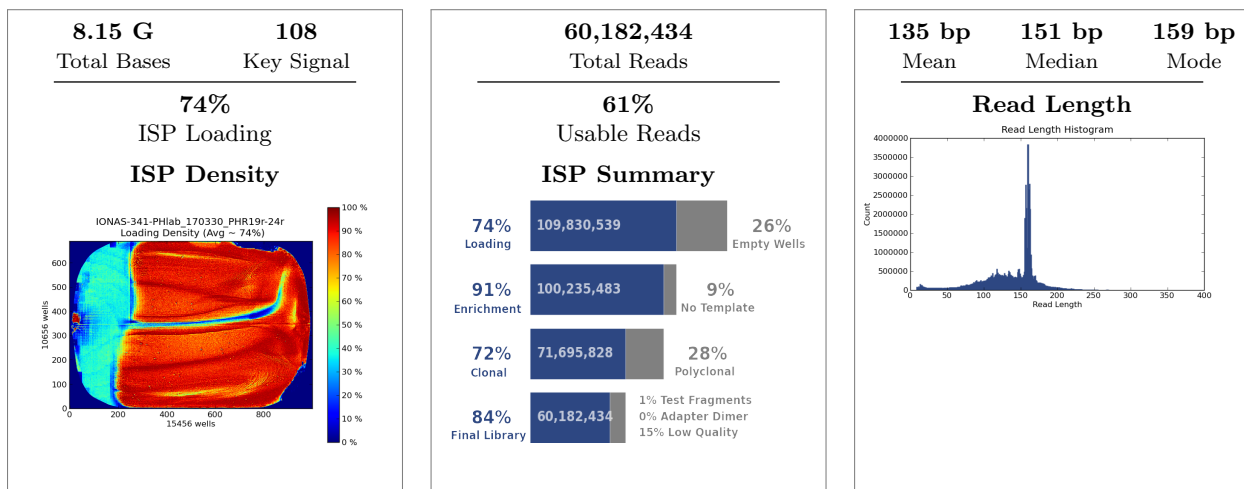


Run Summary



Addressable Wells	148,155,732	
With ISPs	109,830,539	74.1%
Live	100,235,483	91.3%
Test Fragment	866,942	00.9%
Library	99,368,541	99.1%
Library ISPs	99,368,541	
Filtered: Polyclonal	28,539,655	28.7%
Filtered: Low Quality	10,924,039	11.0%
Filtered: Adapter Dimer	260,109	00.3%
Final Library ISPs	60,182,434	60.6%

Notes: PHlab_6RNAs_PHR19r-24r_bc1-6

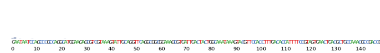
Barcode Name	Sample	Bases	≥ Q20	Reads	Mean Read Length
No barcode	none	192,855,660	140,760,822	2,123,381	91 bp
IonXpressRNA_001	PHR19r-Input	1,655,721,123	1,408,939,307	12,500,491	132 bp
IonXpressRNA_002	PHR20r-bcatPoly	1,336,145,235	1,164,049,919	9,498,439	141 bp
IonXpressRNA_003	PHR21r-bcatMono	1,399,688,303	1,224,979,074	10,141,601	138 bp
IonXpressRNA_004	PHR22r-TCF4	1,355,364,309	1,176,346,430	9,480,555	143 bp
IonXpressRNA_005	PHR23r-FUBP2	937,221,837	781,983,983	7,250,244	129 bp
IonXpressRNA_006	PHR24r-IgG	1,270,517,965	1,106,127,590	9,183,788	138 bp

Test Fragment	Reads	Percent 50AQ17	Read Length Histogram
TF_C	530,745	93%	

TF_1

264,790

89%



Analysis Details

Run Name	R_2017_03_31_10_40_22_user_IONAS-341-PHlab_170330_PHR19r-24r
Run Date	March 31, 2017, 10:42 a.m.
Run Flows	520
Projects	PHLab_RNASeq
Sample	PHR24r-IgG, PHR20r-bcatPoly, PHR19r-Input, PHR22r-TCF4, PHR23r-FUBP2, PHR21r-bcatMono
Reference	
Instrument	IONAS
Flow Order	TACGTACGTCTGAGCATCGATCGATGTACAGC
Library Key	TCAG
TF Key	ATCG
Chip ID	DACJ15967
Chip Check	Passed
Chip Type	P1.1.17
Chip Data	tiled
Barcode Set	IonXpressRNA
Analysis Name	Auto_user_IONAS-341-PHlab_170330_PHR19r-24r_443
Analysis Date	March 31, 2017, 6:11 p.m.
Analysis Flows	0
runID	KGZ3M
BeadFind Args	justBeadFind -beadfind-minlivesnr 3 -region-size=216,224 -total-timeout 600
Analysis Args	Analysis -from-beadfind -clonal-filter-bkgmodel true -region-size=216,224 -bkg-bfmask-update false -gpuWorkLoad 1 -total-timeout 600 -gopt /opt/ion/config/gopt _p 1.1.17 _a mpliseq _e xome.param.json
Pre-BaseCaller Args for calibration	BaseCaller -barcode-filter 0.01 -barcode-filter-minreads 10 -phasing-residual-filter=2.0 -max-phasing-levels 2
Calibration Args	Calibration
BaseCaller Args	BaseCaller -barcode-filter 0.01 -barcode-filter-minreads 10 -min-read-length 8 -phasing-residual-filter=2.0 -num-unfiltered 1000 -barcode-filter-postpone 1
Alignment Args	tmap mapall ... stage1 map4
IonStats Args	ionstats alignment
Analysis Parameters	default

Chef Summary

Chef Template Prep Information:

Chef Last Updated	March 31, 2017, 10:33 a.m.
Chef Instrument Name	CHEF00509
Sample Position	2
Tip Rack Barcode	45528003C
Chip Type 1	P1v3
Chip Type 2	P1v3
Chip Expiration 1	Oct2017
Chip Expiration 2	Oct2017
Templating Kit Type	Ion PI Hi-Q Chef Kit
Reagent Expiration	03710
Reagent Lot Number	1703710
Reagent Part Number	A27284C
Solution Lot Number	1703711
Solution Part Number	A27282C
Solution Expiration	03711
Chef Script Version	263
Chef Package Version	IC.5.0.1

Software Version

Torrent_Suite	5.0.5
host	FW7DQV1
ion-analysis	5.0.13-1
ion-chefupdates	5.0.7
ion-dbreports	5.0.34-1
ion-gpu	5.0.0-1
ion-pipeline	5.0.17-1
ion-plugins	5.0.28-1
ion-protonupdates	5.0.3
ion-torrentr	5.0.0-1
Script	2.1.33
LiveView	2045
DataCollect	3220
OIA	5002
OS	30
Graphics	52
Ion.Chef	IC.5.0.1