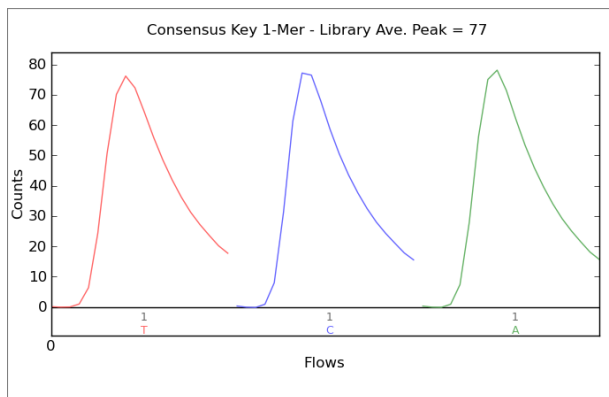
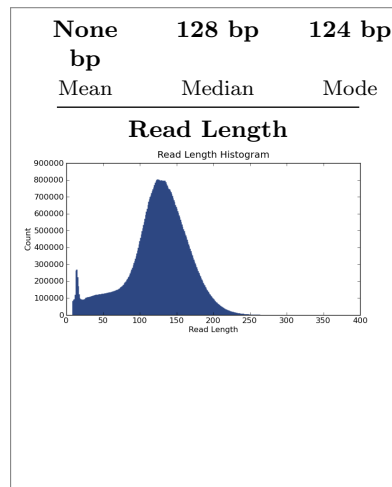
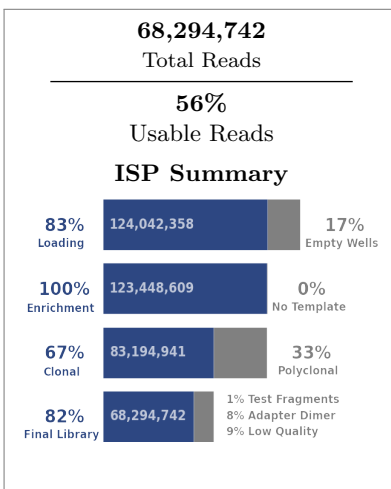
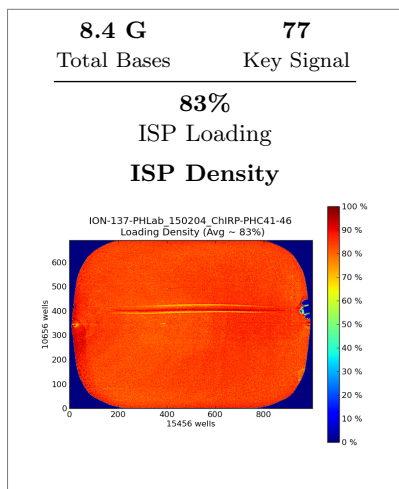


Run Summary



Addressable Wells	148,603,956	
With ISPs	124,042,358	83.5%
Live	123,448,609	99.5%
Test Fragment	883,244	00.7%
Library	122,565,365	99.3%

Library ISPs	122,565,365	
Filtered: Polyclonal	40,253,668	32.8%
Filtered: Low Quality	9,390,781	07.7%
Filtered: Primer Dimer	6,306,367	05.1%
Final Library ISPs	68,294,742	55.7%

Notes: PHlab_AG-6ChIRP_PHC41-ODD1-bc8_PHC42-EVEN1-bc10_PHC43-LacZ1-bc11_PHC44-ODD2-bc12_PHC45-EVEN2-bc13_PHC46-LacZ2-bc16

Barcode Name	Sample	Bases	≥ Q20	Reads	Mean Read Length
No barcode	none	212,981,562	154,649,576	2,419,405	88 bp
IonXpress_008	PHC41-ODD1	1,542,469,806	1,244,620,428	12,272,820	125 bp
IonXpress_010	PHC42-EVEN1	1,491,157,474	1,216,488,283	12,163,642	122 bp
IonXpress_011	PHC43-LacZ1	1,437,027,002	1,169,799,384	11,580,441	124 bp
IonXpress_012	PHC44-ODD2	1,206,881,628	1,005,919,350	9,722,407	124 bp
IonXpress_013	PHC45-EVEN2	1,401,198,728	1,137,263,121	11,121,824	125 bp
IonXpress_016	PHC46-LacZ2	1,101,329,639	914,010,680	8,927,289	123 bp

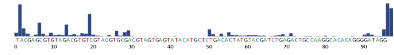
Test Fragment Reads Percent 50AQ17 Read Length Histogram

Run Report for Auto_user_ION-137-PHLab_150204_ChIRP-PHC41-46_202

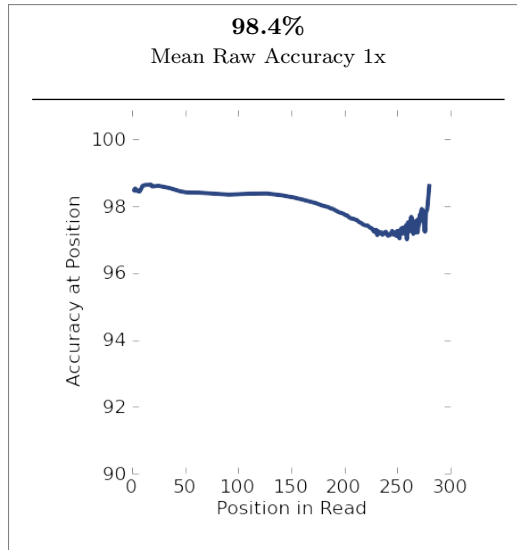
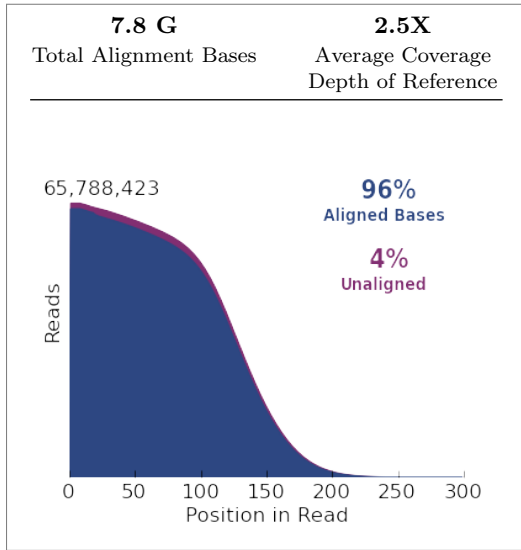
TF_C

720,358

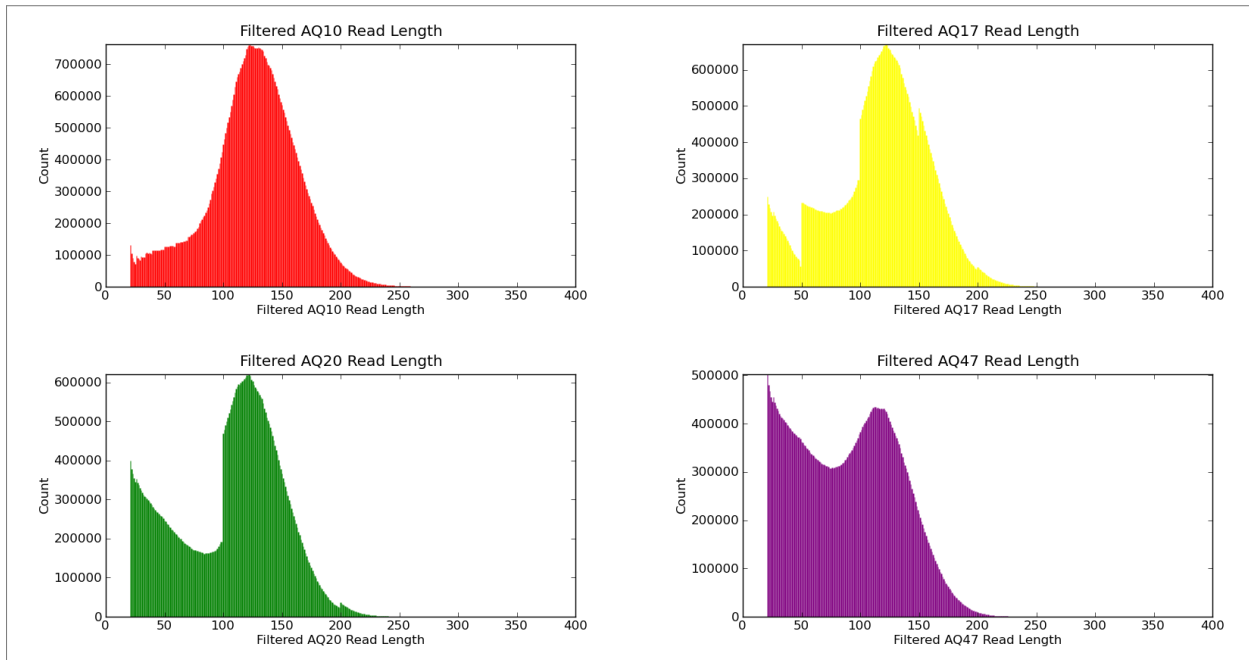
45%



Alignment Summary (*aligned to Homo sapiens*)



	AQ17	AQ20	Perfect
Total Number of Bases [Mbp]	6.6 G	5.6 G	4.5 G
Mean Length [bp]	117	106	89
Longest Alignment [bp]	307	289	283
Mean Coverage Depth	2.1	1.8	1.5



Analysis Details

Run Name	R_2015_02_04_12.32.35_user_ION-137-PHLab_150204_ChIRP-PHC41-46
Run Date	Feb. 4, 2015, 12:34 p.m.
Run Flows	520
Projects	PHLab_ChIRP
Sample	PHC42-EVEN1, PHC45-EVEN2, PHC46-LacZ2, PHC41-ODD1, PHC44-ODD2, PHC43-LacZ1
Reference	
PGM	IONAS
Flow Order	TACGTACGTCTGAGCATCGATCGATGTACAGC
Library Key	TCAG
TF Key	ATCG
Chip Check	Passed
Chip Type	P1.1.17
Chip Data	tiled
Barcode Set	IonXpress
Analysis Name	Auto_user_ION-137-PHLab_150204_ChIRP-PHC41-46_202
Analysis Date	Feb. 4, 2015, 9:44 p.m.
Analysis Flows	0
runID	H4PGZ

Software Version

Torrent_Suite	4.2.1
host	FW7DQV1
ion-analysis	4.2.18-1
ion-chefupdates	4.2.0
ion-dbreports	4.2.22-1
ion-gpu	4.2.2-1
ion-pipeline	4.2.12-1
ion-plugins	4.2.28-1
ion-protonupdates	4.2.2
ion-torrentr	4.2.1-1
LiveView	1835
DataCollect	2929
OIA	4201
OS	21
Graphics	34