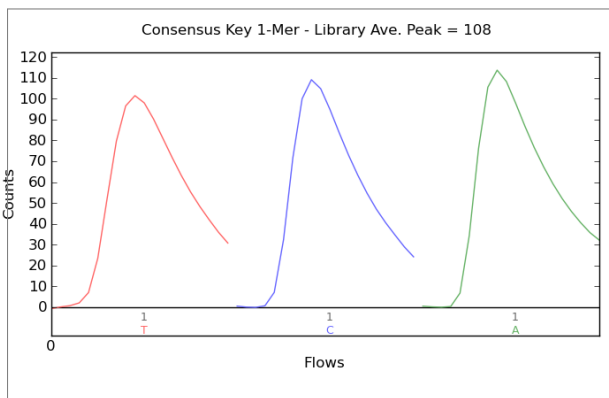
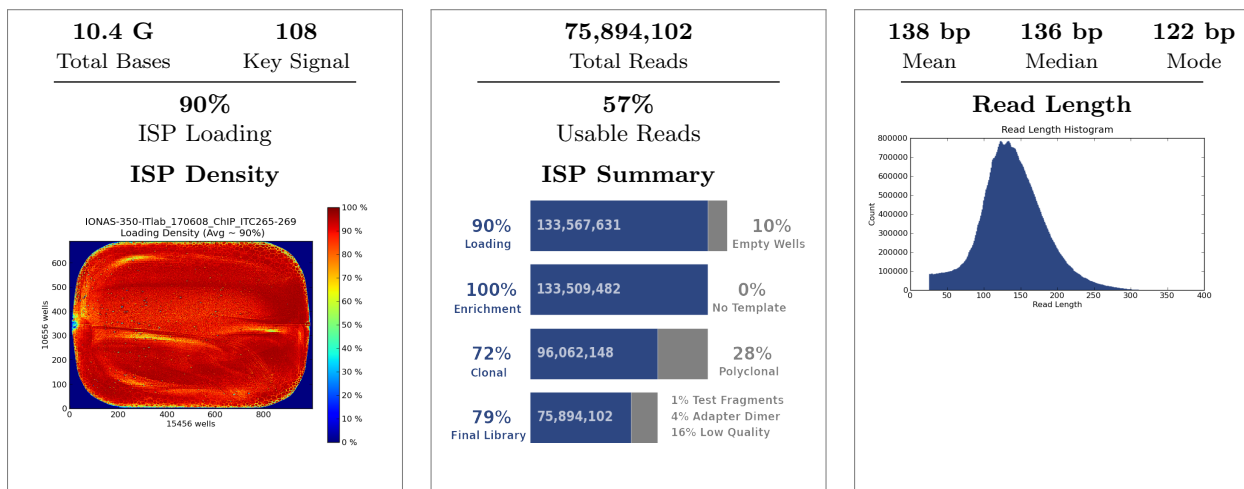


Run Summary



Addressable Wells		148,155,732
With ISPs	133,567,631	90.2%
Live	133,509,482	100.0%
Test Fragment	1,240,075	00.9%
Library	132,269,407	99.1%
Library ISPs		132,269,407
Filtered: Polyclonal	37,447,334	28.3%
Filtered: Low Quality	16,237,253	12.3%
Filtered: Adapter Dimer	3,412,768	02.6%
Final Library ISPs	75,894,102	57.4%

Notes: ITlab_EP11samples_ITC265-267_koDENTCP_6MarousoSamples_ITC268-9

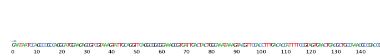
Barcode Name	Sample	Bases	$\geq Q20$	Reads	Mean Read Length
No barcode	none	198,667,883	162,905,639	1,502,771	132 bp
IonXpress_009	ITC265-ko2DENTCP	1,715,080,896	1,511,159,703	12,491,967	137 bp
IonXpress_010	ITC266-ko3DENTCP	2,079,997,178	1,825,653,223	15,302,652	136 bp
IonXpress_011	ITC267-ko4DENTCP	2,095,115,806	1,867,614,128	15,512,398	135 bp
IonXpress_012	ITC268-Mar5	2,092,815,271	1,816,919,427	14,704,621	142 bp
IonXpress_013	ITC269-Mar6	2,231,541,578	1,928,171,126	16,009,596	139 bp

Test Fragment	Reads	Percent 50AQ17	Read Length Histogram
TF_C	715,822	94%	

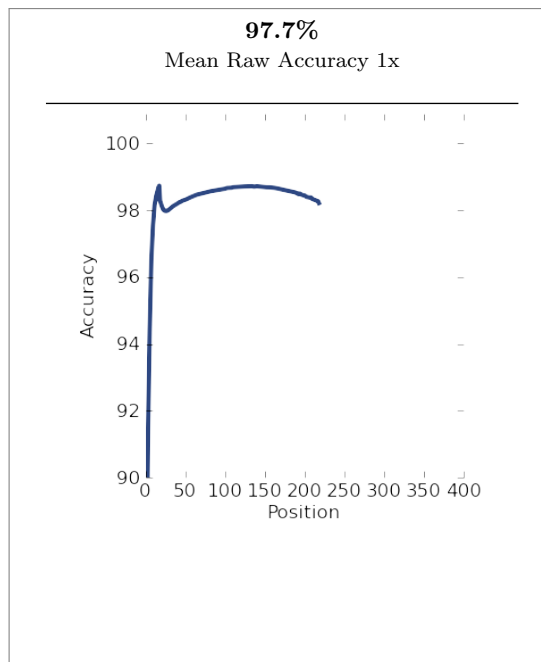
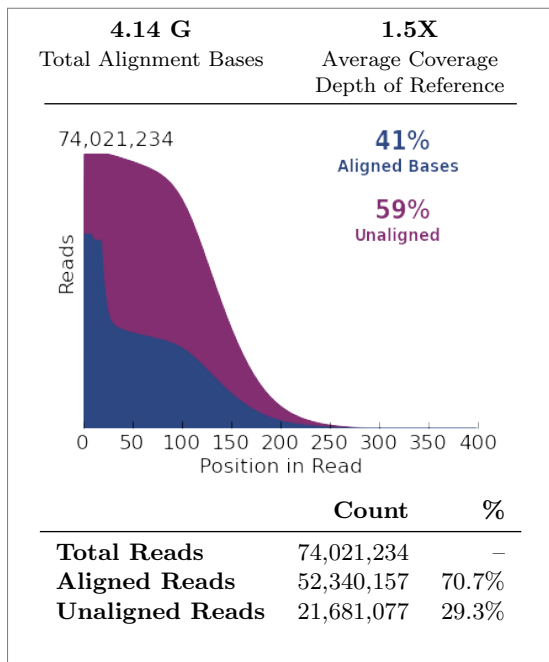
TF_1

465,711

91%

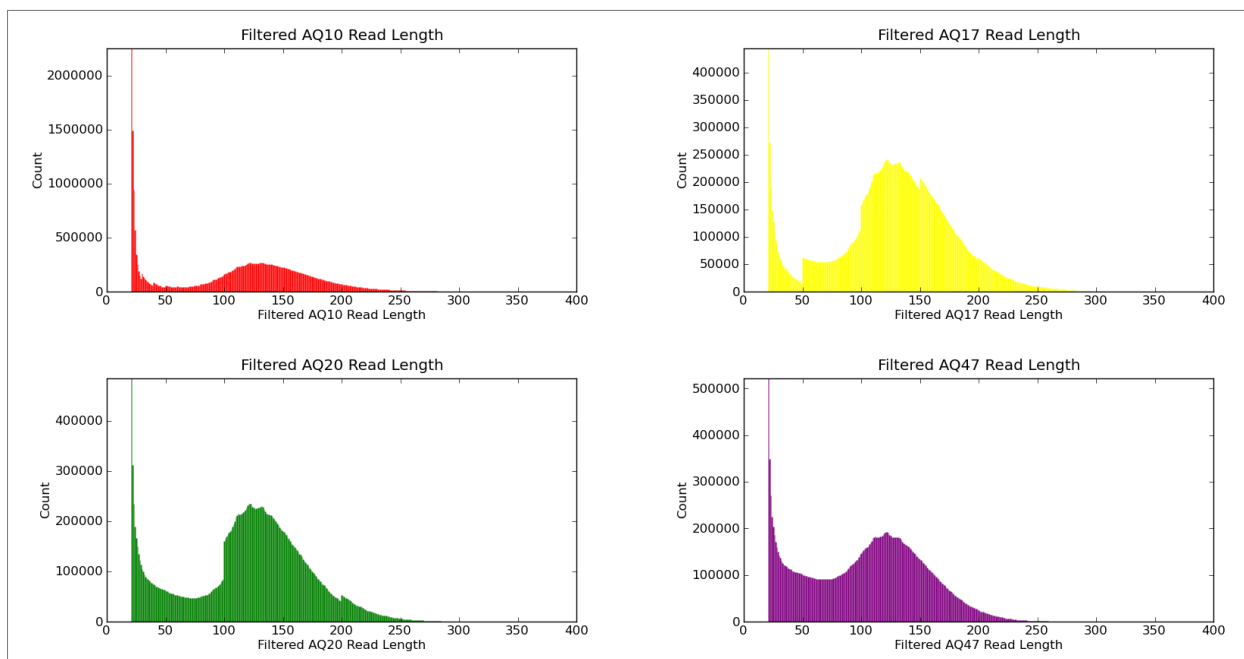


Alignment Summary (aligned to *Mus musculus 10*)



Alignment Quality

	AQ17	AQ20	Perfect
Total Number of Bases [Mbp]	3.11 G	2.79 G	2.3 G
Mean Length [bp]	127	119	103
Longest Alignment [bp]	337	334	320
Mean Coverage Depth	1.1	1.0	0.8



Analysis Details

Run Name	R_2017_06_09_13_18_10_user_IONAS-350-ITlab_170608_ChIP_ITC265-269
Run Date	June 9, 2017, 1:20 p.m.
Run Flows	520
Projects	ITLab_ChipSeq
Sample	ITC268-Mar5, ITC267-ko4DENTCP, ITC266-ko3DENTCP, ITC265-ko2DENTCP, ITC269-Mar6
Reference	
Instrument	IONAS
Flow Order	TACGTACGTCTGAGCATCGATCGATGTACAGC
Library Key	TCAG
TF Key	ATCG
Chip ID	DACD12000
Chip Check	Passed
Chip Type	P1.1.17
Chip Data	tiled
Barcode Set	IonXpress
Analysis Name	Auto_user_IONAS-350-ITlab_170608_ChIP_ITC265-269_453
Analysis Date	June 10, 2017, 2:12 a.m.
Analysis Flows	0
runID	DKFLP
BeadFind Args	justBeadFind -beadfind-minlivesnr 3 -region-size=216,224 -total-timeout 600
Analysis Args	Analysis -from-beadfind -clonal-filter-bkgmodel true -region-size=216,224 -bkg-bfmask-update false -gpuWorkLoad 1 -total-timeout 600 -gopt /opt/ion/config/gopt _p 1.1.17 _a mpliseq _e xome.param.json
Pre-BaseCaller Args for calibration	BaseCaller -barcode-filter 0.01 -barcode-filter-minreads 10 -phasing-residual-filter=2.0 -max-phasing-levels 2
Calibration Args	Calibration
BaseCaller Args	BaseCaller -barcode-filter 0.01 -barcode-filter-minreads 10 -phasing-residual-filter=2.0 -num-unfiltered 1000 -barcode-filter-postpone 1
Alignment Args	tmap mapall ... stage1 map4
IonStats Args	ionstats alignment
Analysis Parameters	default

Chef Summary

Chef Template Prep Information:

Chef Last Updated	June 9, 2017, 11:31 a.m.
Chef Instrument Name	CHEF00509
Sample Position	1
Tip Rack Barcode	455280048
Chip Type 1	P1v3
Chip Type 2	P1v3
Chip Expiration 1	Apr2017
Chip Expiration 2	Apr2017
Templating Kit Type	Ion PI Hi-Q Chef Kit
Reagent Expiration	03710
Reagent Lot Number	1703710
Reagent Part Number	A27284C
Solution Lot Number	1703711
Solution Part Number	A27282C
Solution Expiration	03711
Chef Script Version	263
Chef Package Version	IC.5.0.1

Software Version

Torrent_Suite	5.0.5
host	FW7DQV1
ion-analysis	5.0.13-1
ion-chefupdates	5.0.7
ion-dbreports	5.0.34-1
ion-gpu	5.0.0-1
ion-pipeline	5.0.17-1
ion-plugins	5.0.28-1
ion-protonupdates	5.0.3
ion-torrentr	5.0.0-1
Script	2.1.33
LiveView	2045
DataCollect	3220
OIA	5002
OS	30
Graphics	52
Ion.Chef	IC.5.0.1