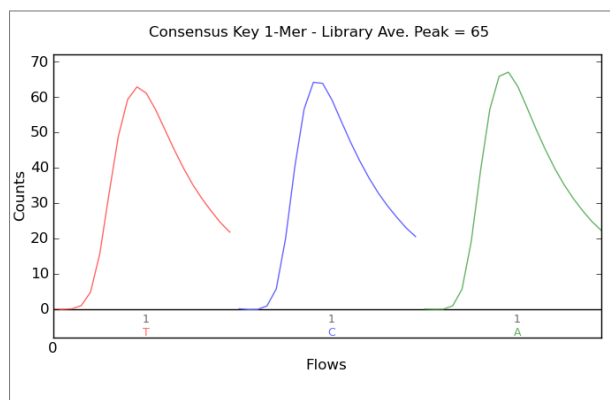
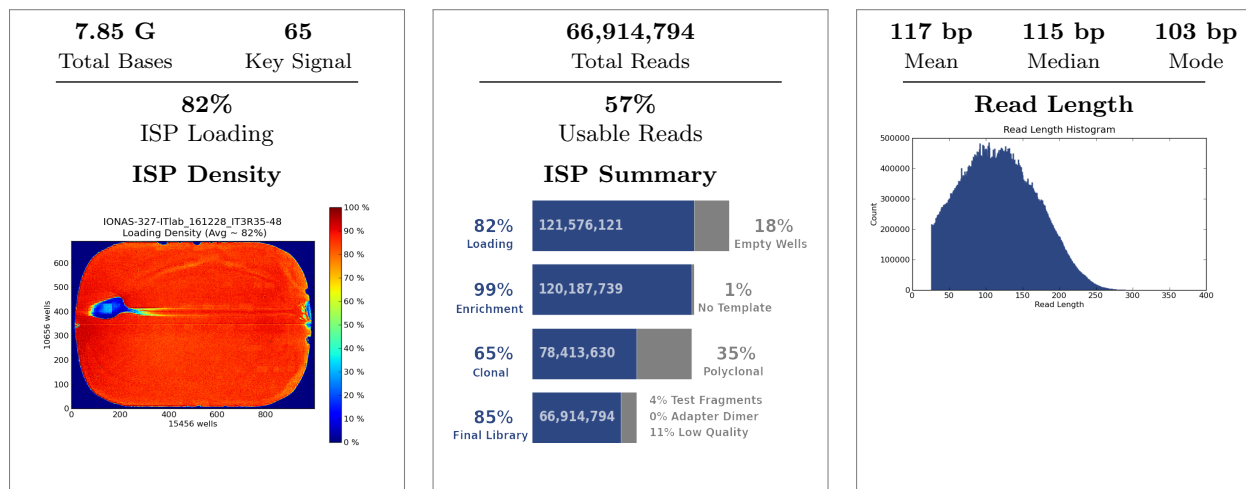


Run Summary



Addressable Wells		148,155,732
With ISPs	121,576,121	82.1%
Live	120,187,739	98.9%
Test Fragment	3,293,846	02.7%
Library	116,893,893	97.3%

Library ISPs		116,893,893
Filtered: Polyclonal	41,774,109	35.7%
Filtered: Low Quality	8,093,876	06.9%
Filtered: Adapter Dimer	121,933	00.1%
Final Library ISPs	66,914,794	57.2%

Notes: ITlab_RR-3RNA-14samples_IT3R35-48_bc33-46

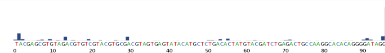
Barcode Name	Sample	Bases	$\geq Q20$	Reads	Mean Read Length
No barcode	none	503,602,276	381,585,820	4,226,513	119 bp
IonXpress_001	none	10,693,073	9,285,798	100,216	107 bp
IonXpress_002	none	6,797,420	5,905,570	62,270	109 bp
IonXpress_003	none	8,723,431	7,471,330	79,754	109 bp
IonXpress_004	none	9,562,776	8,266,075	87,733	109 bp
IonXpress_007	none	392,465,661	305,043,712	3,076,108	128 bp
IonXpress_009	none	154,191,998	120,014,043	1,173,075	131 bp
IonXpress_010	none	343,150,693	263,666,092	2,769,254	124 bp
IonXpress_011	none	272,705,882	211,153,790	2,147,710	127 bp
IonXpress_012	none	382,391,585	297,417,576	2,879,445	133 bp
IonXpress_013	none	285,694,033	220,881,280	2,412,438	118 bp

Run Report for Auto_user_IONAS-327-ITlab_161228_IT3R35-48_427

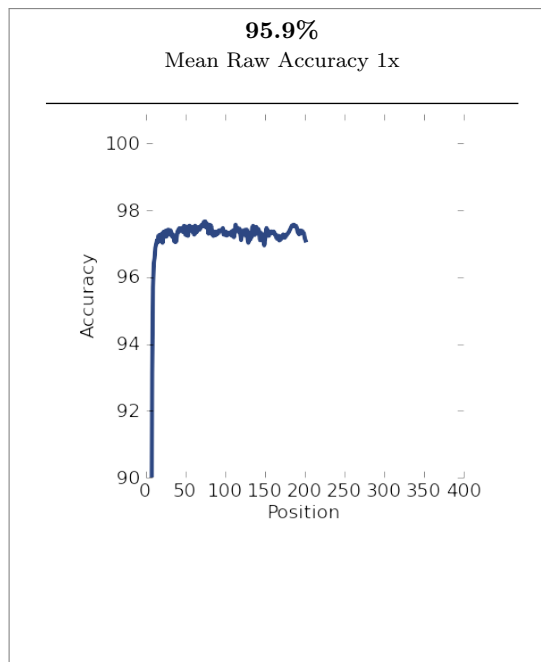
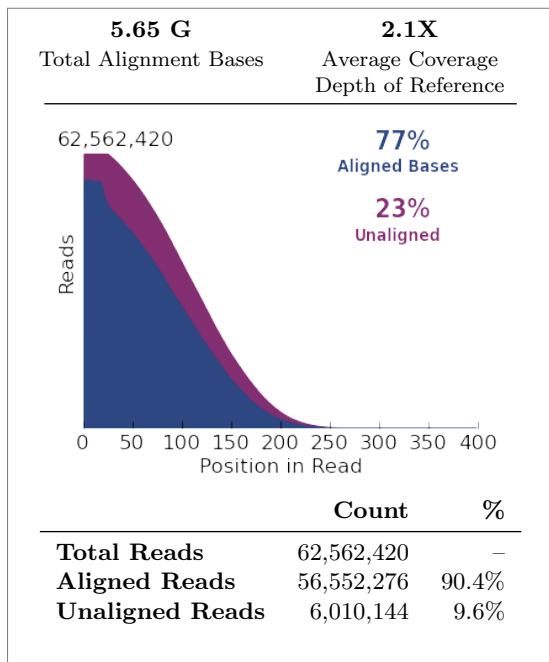
IonXpress_014	none	297,198,701	255,695,361	2,446,029	122 bp
IonXpress_015	none	247,938,771	218,807,328	2,374,187	104 bp
IonXpress_016	none	53,773,954	47,910,878	668,836	80 bp
IonXpress_019	none	52,924,008	44,736,168	413,469	128 bp
IonXpress_020	none	49,927,068	42,421,301	392,108	127 bp
IonXpress_021	none	22,896,980	19,319,266	174,957	131 bp
IonXpress_022	none	46,198,346	38,953,464	356,590	130 bp
IonXpress_025	none	43,968,578	37,469,813	342,437	128 bp
IonXpress_033	IT3R35-3312-1	486,494,888	374,239,954	4,079,102	119 bp
IonXpress_034	IT3R36-3312-3	423,215,637	321,184,432	3,710,788	114 bp
IonXpress_035	IT3R37-3343-2	425,781,621	322,792,101	3,685,534	116 bp
IonXpress_036	IT3R38-3343-3	470,554,354	361,231,030	4,014,342	117 bp
IonXpress_037	IT3R39-3343-4	228,953,225	173,892,837	1,985,466	115 bp
IonXpress_038	IT3R40-wt1	516,251,417	389,823,220	4,464,567	116 bp
IonXpress_039	IT3R41-wt2	382,000,223	291,387,782	3,420,393	112 bp
IonXpress_040	IT3R42-wt5	149,425,709	112,221,787	1,405,935	106 bp
IonXpress_041	IT3R43-wt15	327,438,895	249,292,857	2,945,252	111 bp
IonXpress_042	IT3R44-wt16	35,297,659	26,206,765	540,310	65 bp
IonXpress_043	IT3R45-wt17	238,006,235	182,057,237	2,160,825	110 bp
IonXpress_044	IT3R46-3308-1	406,843,032	311,276,490	3,485,608	117 bp
IonXpress_045	IT3R47-3308-2	153,885,640	116,634,993	1,290,149	119 bp
IonXpress_046	IT3R48-3308-4	417,383,285	319,582,070	3,417,533	122 bp

Test Fragment	Reads	Percent 50AQ17	Read Length Histogram
---------------	-------	----------------	-----------------------

TF_C	2,451,810	67%	
-------------	------------------	------------	--

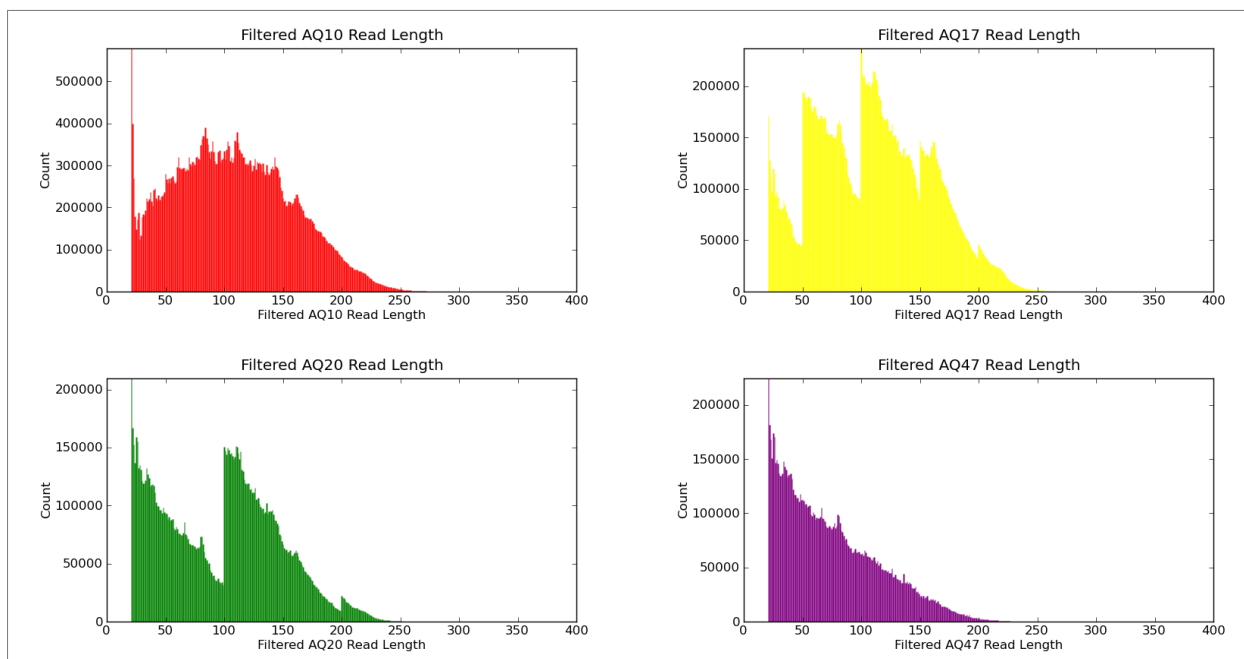


Alignment Summary (aligned to *Mus musculus 10*)



Alignment Quality

	AQ17	AQ20	Perfect
Total Number of Bases [Mbp]	2.56 G	1.43 G	846 M
Mean Length [bp]	109	96	74
Longest Alignment [bp]	312	309	284
Mean Coverage Depth	0.9	0.5	0.3



Analysis Details

Run Name	R_2016_12_28_12_39_18_user_IONAS-327-ITlab_161228_IT3R35-48
Run Date	Dec. 28, 2016, 12:41 p.m.
Run Flows	520
Projects	ITLab_3RNAseq , LexoGen_QuantSeq
Sample	IT3R37-3343-2, IT3R44-wt16, IT3R36-3312-3, IT3R39-3343-4, IT3R40-wt1, IT3R42-wt5, IT3R43-wt15, IT3R41-wt2, IT3R38-3343-3, IT3R48-3308-4, IT3R46-3308-1, IT3R35-3312-1, IT3R45-wt17, IT3R47-3308-2
Reference	
Instrument	IONAS
Flow Order	TACGTACGTCTGAGCATCGATCGATGTACAGC
Library Key	TCAG
TF Key	ATCG
Chip ID	
Chip Check	Passed
Chip Type	P1.1.17
Chip Data	tiled
Barcode Set	IonXpress
Analysis Name	Auto_user_IONAS-327-ITlab_161228_IT3R35-48_427
Analysis Date	Dec. 28, 2016, 8:50 p.m.
Analysis Flows	0
runID	969QG
BeadFind Args	justBeadFind -beadfind-minlivesnr 3 -region-size=216,224 -total-timeout 600
Analysis Args	Analysis -from-beadfind -clonal-filter-bkgmodel true -region-size=216,224 -bkg-bfmask-update false -gpuWorkLoad 1 -total-timeout 600 -gopt /opt/ion/config/gopt _p 1.1.17 _a mpliseq _e xome.param.json
Pre-BaseCaller Args for calibration	BaseCaller -barcode-filter 0.01 -barcode-filter-minreads 10 -phasing-residual-filter=2.0 -max-phasing-levels 2
Calibration Args	Calibration
BaseCaller Args	BaseCaller -barcode-filter 0.01 -barcode-filter-minreads 10 -phasing-residual-filter=2.0 -num-unfiltered 1000 -barcode-filter-postpone 1
Alignment Args	tmap mapall ... stage1 map4
IonStats Args	ionstats alignment
Analysis Parameters	default

Chef Summary

Ion Chef was not used for this run |

Software Version

Torrent_Suite	5.0.5
host	FW7DQV1
ion-analysis	5.0.13-1
ion-chefupdates	5.0.7
ion-dbreports	5.0.34-1
ion-gpu	5.0.0-1
ion-pipeline	5.0.17-1
ion-plugins	5.0.28-1
ion-protonupdates	5.0.3
ion-torrentr	5.0.0-1
Script	2.1.33
LiveView	2045
DataCollect	3220
OIA	5002
OS	30
Graphics	52