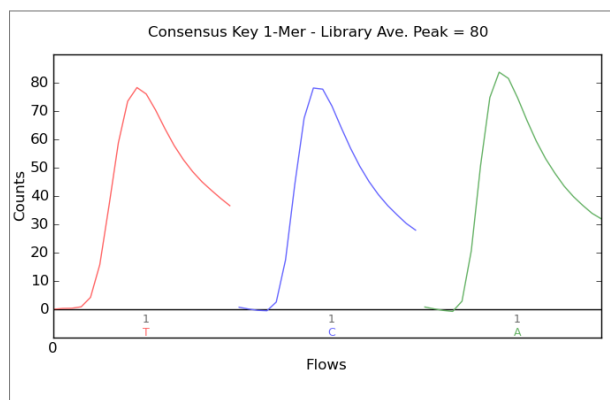
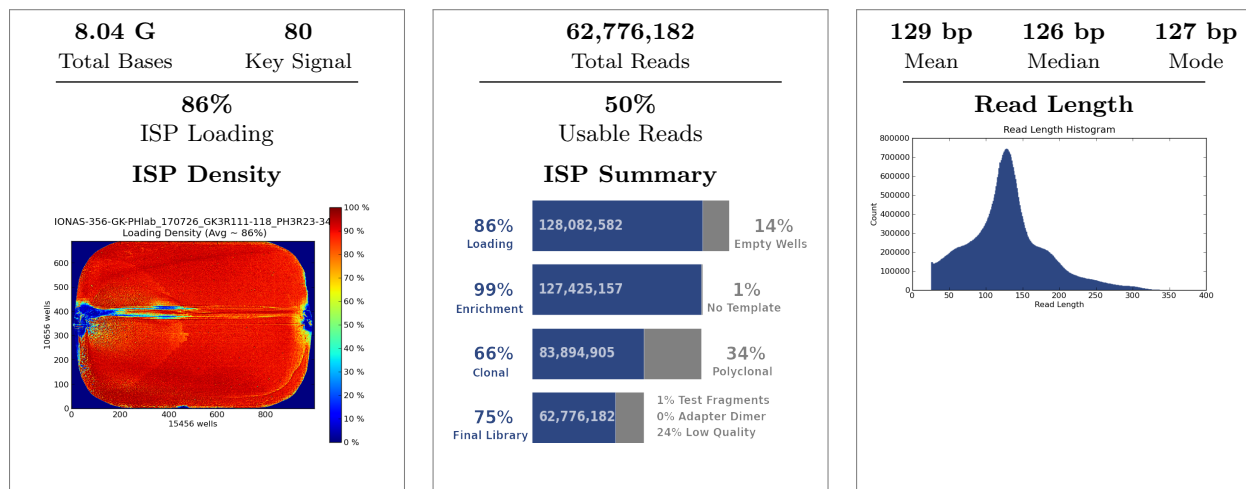


Run Summary



Addressable Wells		148,155,732
With ISPs	128,082,582	86.5%
Live	127,425,157	99.5%
Test Fragment	955,347	00.7%
Library	126,469,810	99.3%

Library ISPs		126,469,810
Filtered: Polyclonal	43,530,252	34.4%
Filtered: Low Quality	21,569,855	17.1%
Filtered: Adapter Dimer	140,986	00.1%
Final Library ISPs	62,776,182	49.6%

Notes: PHlab-11samples_GK3R-6samples_3RNAseq

Barcode Name	Sample	Bases	$\geq Q20$	Reads	Mean Read Length
No barcode	none	665,705,779	453,077,212	5,260,645	127 bp
IonXpress_001	PH3R23-LSBcat-Con1	474,785,559	335,125,214	3,616,955	131 bp
IonXpress_002	PH3R24-LSBcat-Con2	337,921,414	239,350,100	2,578,891	131 bp
IonXpress_003	PH3R25-LSBcat-Con3	274,584,412	192,814,310	2,094,571	131 bp
IonXpress_004	none	21,258,156	15,216,413	166,776	127 bp
IonXpress_005	PH3R27-LSBcat-Dox2	382,806,756	270,622,141	2,972,252	129 bp
IonXpress_006	PH3R28-LSBcat-Dox3	388,036,401	277,774,913	3,177,676	122 bp
IonXpress_011	none	8,504,924	6,041,091	65,075	131 bp
IonXpress_015	none	5,214,959	3,874,968	42,296	123 bp
IonXpress_017	PH3R29-LGR5Un8-Con1	475,279,666	326,499,735	3,771,012	126 bp

Run Report for Auto_user_IONAS-356-GK-PHlab_170726_GK3R111-118_PH3R23-34_461

IonXpress_018	PH3R30-LGR5Un8-Con2	223,892,825	152,216,168	1,770,041	126 bp
IonXpress_019	PH3R31-LGR5Un8-Con3	525,250,013	367,756,067	4,152,622	126 bp
IonXpress_020	PH3R32-LGR5Un8-Dox1	448,934,088	312,270,078	3,497,544	128 bp
IonXpress_022	PH3R33-LGR5Un8-Dox2	407,885,671	284,643,454	3,126,305	130 bp
IonXpress_023	PH3R34-LGR5Un8-Dox3	304,751,050	214,058,591	2,459,533	124 bp
IonXpress_024	none	25,905,489	18,478,281	199,604	130 bp
IonXpress_025	none	20,269,901	14,305,508	153,865	132 bp
IonXpress_026	none	9,585,824	6,846,242	71,551	134 bp
IonXpress_027	none	25,652,793	18,095,072	198,980	129 bp
IonXpress_028	none	10,330,557	7,496,016	81,251	127 bp
IonXpress_029	none	9,853,662	7,013,583	76,440	129 bp
IonXpress_030	none	11,927,584	8,668,269	95,854	124 bp
IonXpress_033	none	11,931,105	8,364,826	90,487	132 bp
IonXpress_035	none	21,351,679	14,933,802	164,383	130 bp
IonXpress_037	none	7,257,780	5,218,110	57,051	127 bp
IonXpress_039	none	11,089,445	8,088,304	92,598	120 bp
IonXpress_040	none	5,124,922	3,686,828	41,605	123 bp
IonXpress_042	GK3R112-Empty2	471,996,485	336,345,228	3,657,161	129 bp
IonXpress_043	GK3R113-Empty3	468,025,209	325,576,602	3,650,945	128 bp
IonXpress_044	GK3R114-Empty4	541,472,165	382,433,535	4,109,139	132 bp
IonXpress_046	GK3R116-Wnt2	457,760,922	326,172,649	3,533,012	130 bp
IonXpress_047	GK3R117-Wnt3	455,563,526	324,687,451	3,549,158	128 bp
IonXpress_048	GK3R118-Wnt4	527,512,426	381,602,715	3,946,422	134 bp

Test Fragment

Reads

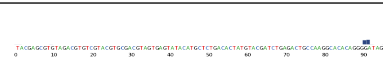
Percent 50AQ17

Read Length Histogram

TF_C

531,868

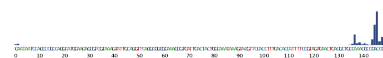
93%



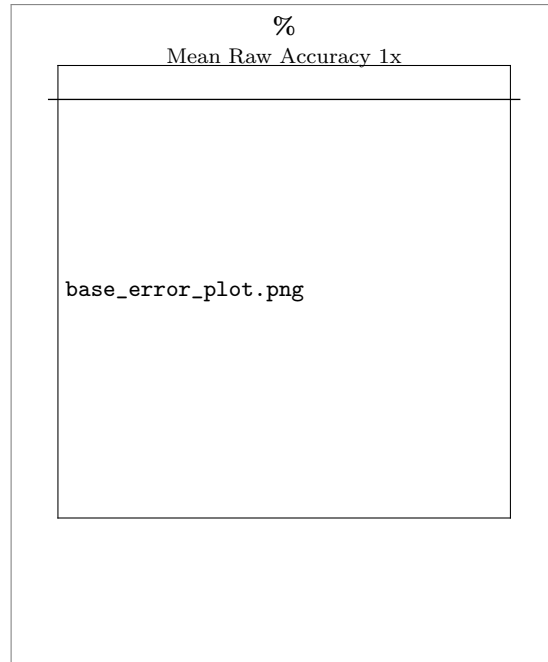
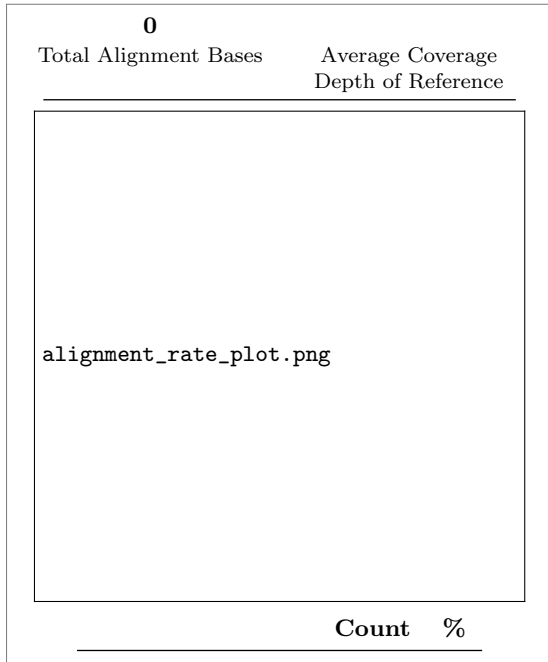
TF_1

395,076

92%



Alignment Summary (*aligned to*)



Total Reads	0	-
Aligned Reads	0	0%

	Alignment Quality		
	AQ17	AQ20	Perfect
Total Number of Bases [Mbp]	0	0	0
Mean Length [bp]	0	0	0
Longest Alignment [bp]	0	0	0
Mean Coverage Depth			

Filtered_Alignments_Q10.png

Filtered_Alignments_Q17.png

Filtered_Alignments_Q20.png

Filtered_Alignments_Q47.png

Analysis Details

Run Name	R_2017_07_26_16_21_12_user_IONAS-356-GK-PHlab_170726_GK3R111-118_PH3R23-34
Run Date	July 26, 2017, 4:23 p.m.
Run Flows	520
Projects	PHLab_3RNAseq , GKLab_3RNAseq
Sample	PH3R33-LGR5Un8-Dox2, GK3R117-Wnt3, PH3R31-LGR5Un8-Con3, PH3R29-LGR5Un8-Con1, PH3R23-LSBcat-Con1, GK3R113-Empty3, GK3R118-Wnt4, PH3R32-LGR5Un8-Dox1, GK3R116-Wnt2, PH3R34-LGR5Un8-Dox3, PH3R25-LSBcat-Con3, PH3R27-LSBcat-Dox2, PH3R28-LSBcat-Dox3, PH3R24-LSBcat-Con2, GK3R112-Empty2, GK3R114-Empty4, PH3R30-LGR5Un8-Con2
Reference	
Instrument	IONAS
Flow Order	TACGTACGTCTGAGCATCGATCGATGTACAGC
Library Key	TCAG
TF Key	ATCG
Chip ID	
Chip Check	Passed
Chip Type	P1.1.17
Chip Data	tiled
Barcode Set	IonXpress
Analysis Name	Auto_user_IONAS-356-GK-PHlab_170726_GK3R111-118_PH3R23-34_461
Analysis Date	July 27, 2017, 2:28 a.m.
Analysis Flows	0
runID	QFIJ2
BeadFind Args	justBeadFind -beadfind-minlivesnr 3 -region-size=216,224 -total-timeout 600
Analysis Args	Analysis -from-beadfind -clonal-filter-bkgmodel true -region-size=216,224 -bkg-bfmask-update false -gpuWorkLoad 1 -total-timeout 600 -gopt /opt/ion/config/gopt _p 1.1.17 _a mpliseq _e xome.param.json
Pre-BaseCaller Args for calibration	BaseCaller -barcode-filter 0.01 -barcode-filter-minreads 10 -phasing-residual-filter=2.0 -max-phasing-levels 2
Calibration Args	Calibration
BaseCaller Args	BaseCaller -barcode-filter 0.01 -barcode-filter-minreads 10 -phasing-residual-filter=2.0 -num-unfiltered 1000 -barcode-filter-postpone 1
Alignment Args	tmap mapall ... stage1 map4
IonStats Args	ionstats alignment
Analysis Parameters	default

Chef Summary

Ion Chef was not used for this run |

Software Version

Torrent_Suite	5.0.5
host	FW7DQV1
ion-analysis	5.0.13-1
ion-chefupdates	5.0.7
ion-dbreports	5.0.34-1
ion-gpu	5.0.0-1
ion-pipeline	5.0.17-1
ion-plugins	5.0.28-1
ion-protonupdates	5.0.3
ion-torrentr	5.0.0-1
Script	2.1.33
LiveView	2045
DataCollect	3220
OIA	5002
OS	30
Graphics	52